

RARARTA
Cabinets

WWW.RARARTACABINETS.COM

RARARTA

Cabinets



PRODUCT CATALOG

WWW.RARARTACABINETS.COM

Page 4-9: Product Introduction
Page 10-15: Shaker-Styles Cabinets
Page 16-20: Shaker Base Cabinets
Page 21-26: Shaker Wall Cabinets
Page 27-29: Shaker Vanities
Page 30-34: Shaker Cabinet Accessories
Page 35-38: Frameless-Style Cabinets
Page 39-41: Frameless Base Cabinets
Page 41-45: Frameless Wall Cabinets

Page 46-48: Frameless Vanities
Page 49-51: Frameless Cabinet Accessories
Page 52: Closets
Page 53: Closet Basics
Page 54-56: Closet Drawers
Page 57-58: Closet LED Lighting
Page 59-61: Closet Accessories
Page 62: Warranty

RARARTA — Cabinets —

UPGRADE YOUR ROOM • OWN YOUR BUDGET

We combine factory-direct craftsmanship, modern design,
and local service to help homeowners upgrade their spaces—beautifully and affordably.



- **Factory-Direct Supply:** RaraRTA Cabinets manufactures and supplies directly, cutting unnecessary markups and ensuring you get the best price and quality — every time.
- **Diverse Styles & Custom Finishes:** Choose from 10+ door styles across our Framed, Frameless cabinet lines and closets. Every design comes in a range of colors and finishes to match your home's personality.
- **Precision Craftsmanship & Quality Control:** Our advanced Cefla painting technology from Italy delivers a flawless, durable surface finish — combining beauty and longevity in every panel, with rigorous inspections to ensure every piece meets international quality standards.
- **Free Professional Design Service:** Our experienced design team offers complimentary layout planning, helping you visualize your new space with accurate measurements and tailored recommendations.
- **Local Warehouses, Fast Delivery:** RaraRTA Cabinets with multiple U.S. warehouses and reliable logistics, we ensure quick and secure delivery — usually within 7 days, whether you choose ready-to-assemble or pre-assembled cabinets.



MANUFACTURER-DIRECT
FACTORY-BUILT QUALITY, NO MIDDLEMEN.



U.S. WAREHOUSES
NATIONWIDE COVERAGE
FOR FAST FULFILLMENT.

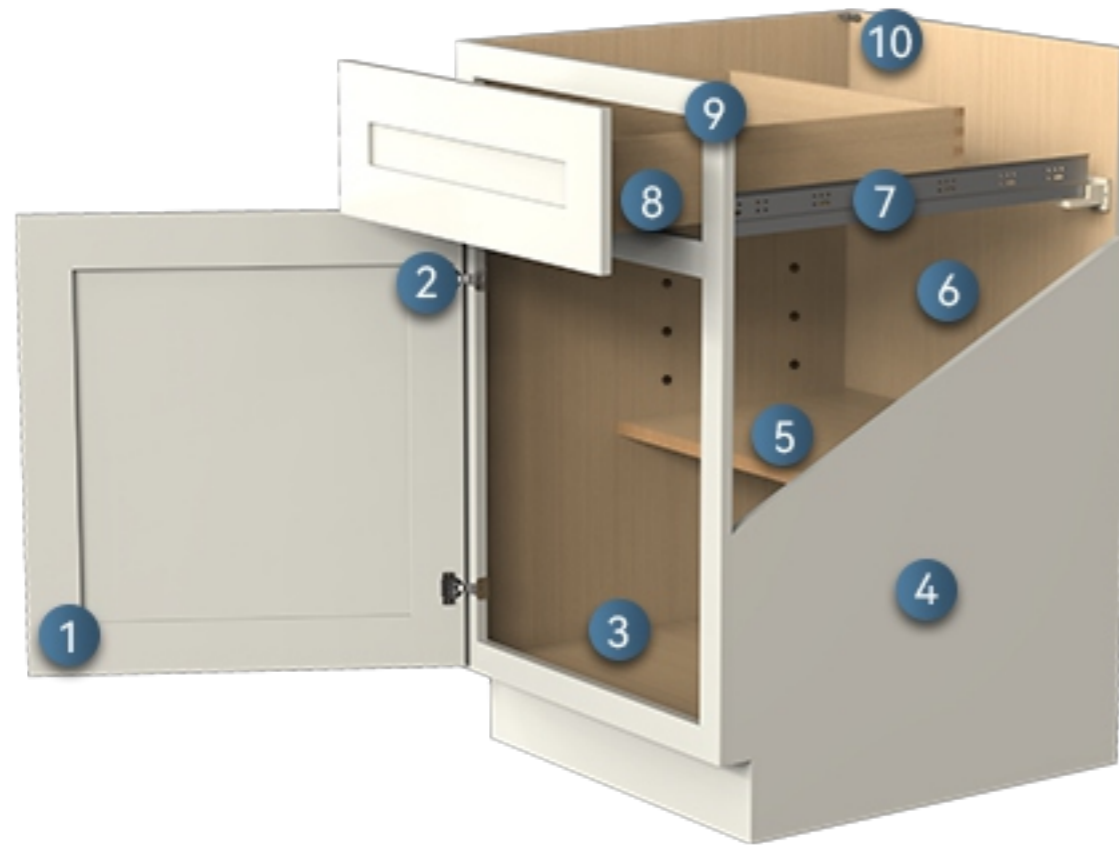


7-DAY DELIVERY
QUICK, RELIABLE SHIPPING
TO YOUR SITE.



WWW.RARARTACABINETS.COM

FRAMED CABINET FEATURES



1. Full overlay shaker door style
2. Concealed 6-way adjustable soft closing hinges
3. UV-coated natural plywood interior
4. UV-coated exterior matching door color
5. Adjustable 3/4" half-depth shelf
6. Plywood-enforced back panel
7. Undermount full extension soft close drawer glides
8. 3/4"x13/4" solid wood cabinet face frame
9. 9/16" dovetail drawer box
10. "L" bracket reinforced base cabinets

Product Gallery



Slim White Shaker



Slim Dove White Shaker



Slim Green Shaker



Dove White Shaker



Honey Wheat Shaker



Modern Slate Shaker



Grey Shaker



White Shaker



Onyx Black Shaker



Midnight Blue Shaker

FRAMELESS CABINET FEATURES



1	3/4" thick full overlay door
2	6-way adjustable soft-close hinge
3	1/4" thick back panel with top and bottom enforced
4	3/4" thick adjustable plywood shelf
5	3/4" plywood side panels with toe kick
6	5/8" plywood bottom & back panel of the drawer
7	UV coated natural plywood interior
8	UV-coated exterior matching door color
9	Full access 6-way adjustable soft-close metal drawers system

Product Gallery



Matte White



Matte Grey



Glossy White



Walnut



Oak



Matte Black

CABINET DESIGN SERVICE DESCRIPTION

1. Submit Your Vision

Submit the basic details to initiate your project.

Floor Plan: A clear, dimensioned drawing (hand-drawn is fine).

Measurements: All necessary sizes and angles.

Inspiration: Your ideas, preferences, and any inspirational images.

Email all materials to: service@rarartacabinets.com

2. Preliminary Design

We will create an initial floor plan tailored to your space and needs.

Timeline: Delivered to your inbox within 1-3 business days.

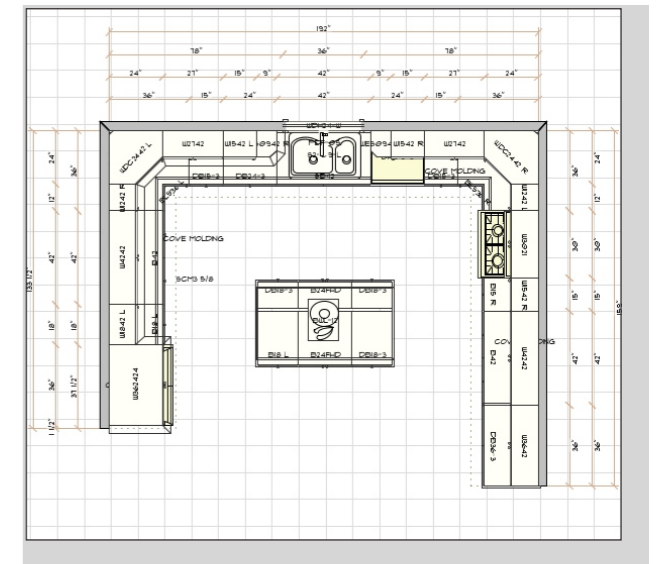
Review the design at your convenience and prepare your feedback.

3. Refine & Finalize

Provide Feedback: Share your modification requests via email.

Revised Drawing: We will refine the design until it meets your full approval.

Receive Your Quote: Once the design is locked, you will receive a detailed, transparent quotation.



Your Responsibilities: For a Flawless Result

- Ensure all submitted dimensions are accurate.
- Review designs and quotes carefully before approval.
- Grant final sign-off to proceed to the ordering and fabrication stage.

Ready to Begin?

Submit your documents today and let's build your dream kitchen.

RARARTA | WWW.RARARTACABINETS.COM
(516)-979-6789

OPULENT WHITE SHAKER

FRAMED DOOR STYLE

Handcrafted for Your Dream Kitchen



SOVEREIGN ONYX BLACK SHAKER

FRAMED DOOR STYLE

Handcrafted for Your Dream Kitchen



IMPERIAL MIDNIGHT BLUE SHAKER FRAMED DOOR STYLE

Handcrafted for Your Dream Kitchen



ETHEREAL WHITE MICRO SHAKER FRAMED DOOR STYLE

Handcrafted for Your Dream Kitchen



REFINED MODREN SLATE SHAKER

FRAMED DOOR STYLE

Handcrafted for Your Dream Kitchen



NOBLE HONEY WHEAT SHAKER

FRAMED DOOR STYLE

Handcrafted for Your Dream Kitchen



BASE CABINETS



2 DRAWERS BASE CABINET

2 drawers

NAME	SIZE	WT
DB24-2	24w x 34 1/2h x 24d	86 lb
DB30-2	30w x 34 1/2h x 24d	96 lb
DB36-2	36w x 34 1/2h x 24d	107 lb

BASE CABINET FULL HEIGHT DOOR

1 door

NAME	SIZE	WT
B09FHD	9w x 34 1/2h x 24d	45 lb

BASE CABINET FULL HEIGHT DOOR

2 doors

NAME	SIZE	WT
B24FHD	24w x 34 1/2h x 24d	66 lb

SINK BASE CABINET

2 doors, 1 false drawer

NAME	SIZE	WT
SB24	24w x 34 1/2h x 24d	47 lb
SB27	27w x 34 1/2h x 24d	51 lb
SB30	30w x 34 1/2h x 24d	52 lb
SB33	33w x 34 1/2h x 24d	53 lb

BASE CABINET

1 door, 1 drawer

NAME	SIZE	WT
B09	9w x 34 1/2h x 24d	45 lb
B12	12w x 34 1/2h x 24d	48 lb
B15	15w x 34 1/2h x 24d	53 lb
B18	18w x 34 1/2h x 24d	56 lb
B21	21w x 34 1/2h x 24d	60 lb

BASE CABINET

2 doors, 1 drawer

NAME	SIZE	WT
B24	24w x 34 1/2h x 24d	66 lb
B27	27w x 34 1/2h x 24d	71 lb
B30	30w x 34 1/2h x 24d	84 lb

SINK BASE CABINET

2 doors, 2 false drawers

NAME	SIZE	WT
SB36	36w x 34 1/2h x 24d	57 lb
SB42	42w x 34 1/2h x 24d	62 lb

CORNER SINK BASE CABINET

NAME	SIZE	WT
CSB42	42w x 34 1/2h x 24d	72 lb

BASE CABINET

2 doors, 2 drawers

NAME	SIZE	WT
B33	33w x 34 1/2h x 24d	88 lb
B36	36w x 34 1/2h x 24d	92 lb
B42	42w x 34 1/2h x 24d	97 lb

3 DRAWERS BASE CABINET

3 drawers

NAME	SIZE	WT
DB12-3	12w x 34 1/2h x 24d	71 lb
DB15-3	15w x 34 1/2h x 24d	79 lb
DB18-3	18w x 34 1/2h x 24d	84 lb
DB21-3	21w x 34 1/2h x 24d	89 lb
DB24-3	24w x 34 1/2h x 24d	96 lb
DB30-3	30w x 34 1/2h x 24d	106 lb
DB36-3	36w x 34 1/2h x 24d	114 lb

FARM HOUSE SINK BASE CABINET

NAME	SIZE	WT
FSM36	36w x 34 1/2h x 24d	57 lb

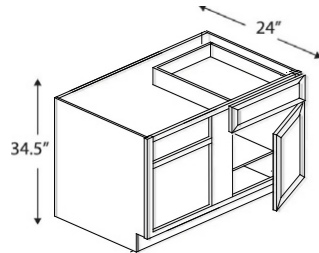
BASE LAZY SUSAN CABINET

2 doors

NAME	SIZE	WT
BLS33*	33w x 34 1/2h x 24d	100 lb
BLS36	36w x 34 1/2h x 24d	113 lb

BLIND CORNER BASE CABINET

1 door, 1 drawer

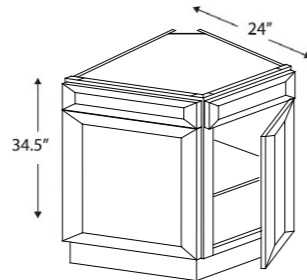


NAME	SIZE	WT
BBC36*	36w x 34 1/2h x 24d	75 lb
BBC42	42w x 34 1/2h x 24d	81 lb

* Specify left or right
 BBC36 - Minimum 5" pull from the wall and max 8" pull when installed
 BBC42 - Minimum 3" pull from the wall and max 8" pull when installed
 Measurements for face frame, opening, middle frame, opening, face frame:
 BBC36-1.5x12x9x12x1.5 BBC42-1.5x15x9x15x1.5

BASE END CORNER CABINET

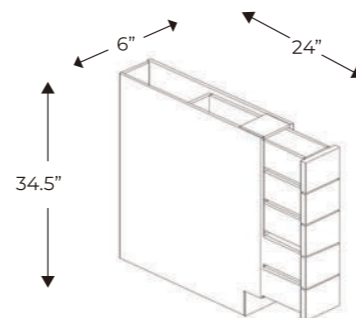
2 doors, 1 false front



NAME	SIZE	WT
BEC24	24w x 34 1/2h x 24d	51 lb

BASE SPICE DRAWER CABINET

5 drawers

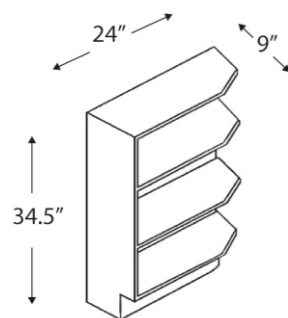


NAME	SIZE	WT
BWRC	6w x 34 1/2h x 24d	59 lb

No soft close
 No glides
 Check for Availability



BASE END SHELF



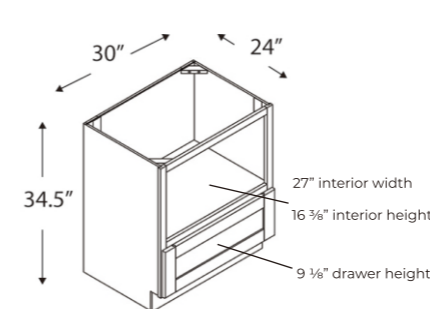
NAME	SIZE	WT
BES09	9w x 34 1/2h x 24d	37 lb

Specify left or right



BASE MICROWAVE CABINET

1 drawer

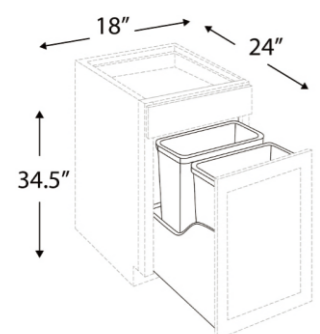


NAME	SIZE	WT
MD30	30w x 34 1/2h x 24d	78 lb

Can accommodate a maximum 27" microwave and can be framed for smaller microwaves.



BASE TRASH CABINET*



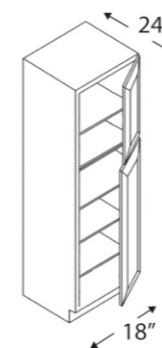
NAME	SIZE
B18+BWBK18-2	18w x 34 1/2h x 24d

Includes two trash cans
 *B18+BWBK18-2 Makes Trash Cabinet



TALL PANTRY CABINET

2 doors

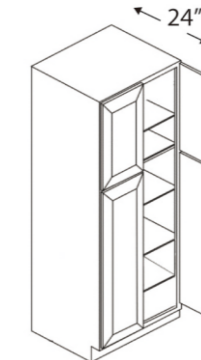


NAME	SIZE	WT
PC188424	18w x 84h x 24d	145 lb
PC189024	18w x 90h x 24d	152 lb
PC189624	18w x 96h x 24d	158 lb

Comes with shelves only
 Roll Out Tray upgrade optional-See "Accessories"

TALL PANTRY CABINET

4 doors

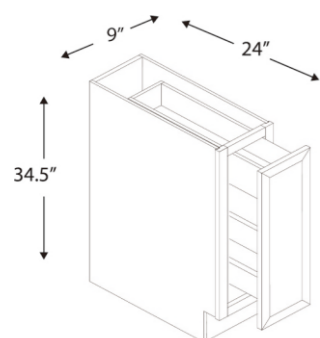


NAME	SIZE	WT
PC248424	24w x 84h x 24d	160 lb
PC249024	24w x 90h x 24d	171 lb
PC249624	24w x 96h x 24d	183 lb
PC308424	30w x 84h x 24d	180 lb
PC309024	30w x 90h x 24d	191 lb
PC309624	30w x 96h x 24d	206 lb

Roll Out Tray upgrade optional-See "Accessories"

BASE SPICE RACK CABINET

1 door

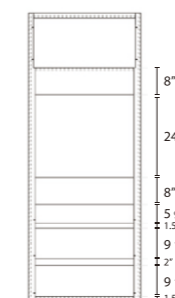
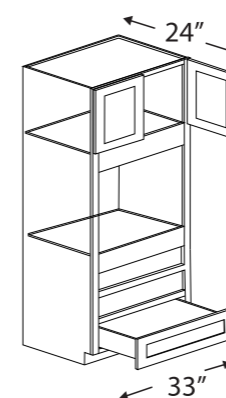


NAME	SIZE	WT
SP09	9w x 34 1/2h x 24d	45 lb



TALL OVEN CABINET

2 doors, 1 bottom drawer



NAME	SIZE	WT
OC338424	33w x 84h x 24d	153 lb
OC339024	33w x 90h x 24d	165 lb
OC339624	33w x 96h x 24d	175 lb

NOTE: Will work for single oven or double oven. One bottom drawer included for double oven configuration (divider will need to be cut). For single oven configuration, purchase one top and one bottom drawer separately.

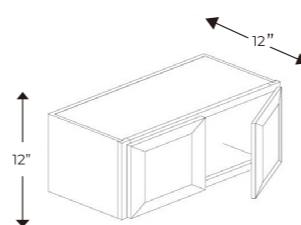


WALL CABINETS



WALL CABINET

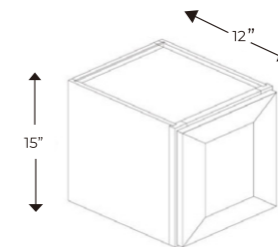
12" high, 2 doors



NAME	SIZE	WT
W3012	30w x 12h x 12d	23 lb
W3312	33w x 12h x 12d	25 lb
W3612	36w x 12h x 12d	26 lb

WALL CABINET

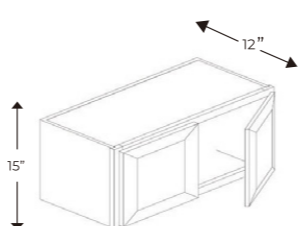
15" high, 1 door



NAME	SIZE	WT
W1215	12w x 15h x 12d	13 lb
W1515	15w x 15h x 12d	16 lb
W1815	18w x 15h x 12d	19 lb
W2115	21w x 15h x 12d	21 lb

WALL CABINET

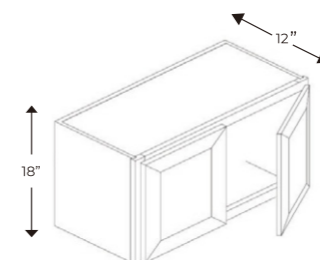
15" high, 2 doors



NAME	SIZE	WT
W2415	24w x 15h x 12d	23 lb
W2715	27w x 15h x 12d	25 lb
W3015	30w x 15h x 12d	27 lb
W3315	33w x 15h x 12d	28 lb
W3615	36w x 15h x 12d	30 lb

WALL CABINET

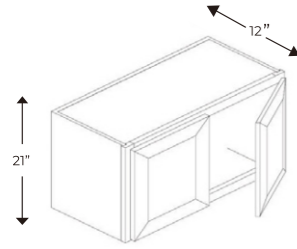
18" high, 2 doors



NAME	SIZE	WT
W3018	30w x 18h x 12d	29 lb
W3318	33w x 18h x 12d	31 lb
W3618	36w x 18h x 12d	33 lb

WALL CABINET

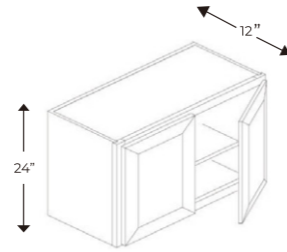
21" high, 2 doors



Name	Size	Wt
W3021	30w x 21h x 12d	32 lb
W3321	33w x 21h x 12d	34 lb
W3621	36w x 21h x 12d	39 lb

WALL CABINET

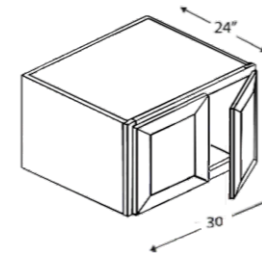
24" high, 2 doors



Name	Size	Wt
W3024	30w x 24h x 12d	39 lb
W3324	33w x 24h x 12d	43 lb
W3624	36w x 24h x 12d	44 lb

WALL FRIDGE CABINET

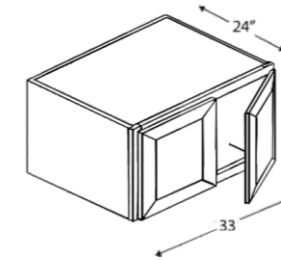
30" wide, 2 doors



NAME	SIZE	WT
W301224	30w x 12h x 24d	31 lb
W301524	30w x 15h x 24d	36 lb
W301824	30w x 18h x 24d	37 lb
W302124	30w x 21h x 24d	48 lb
W302424	30w x 24h x 24d	65 lb

WALL FRIDGE CABINET

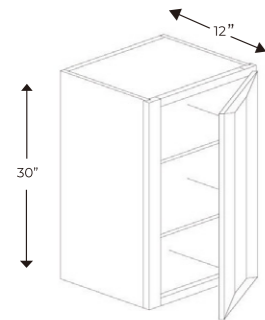
33" wide, 2 doors



NAME	SIZE	WT
W331224	33w x 12h x 24d	32 lb
W331524	33w x 15h x 24d	37 lb
W331824	33w x 18h x 24d	38 lb
W332124	33w x 21h x 24d	49 lb
W332424	33w x 24h x 24d	66 lb

WALL CABINET

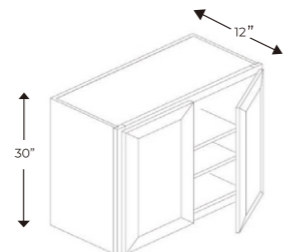
30" high, 1 door



NAME	SIZE	WT
W0930	09w x 30h x 12d	23 lb
W1230	12w x 30h x 12d	26 lb
W1530	15w x 30h x 12d	30 lb
W1830	18w x 30h x 12d	33 lb
W2130	21w x 30h x 12d	39 lb

WALL CABINET

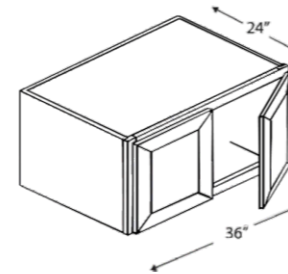
30" high, 2 doors



NAME	SIZE	WT
W2430	24w x 30h x 12d	38 lb
W2730	27w x 30h x 12d	45 lb
W3030	30w x 30h x 12d	49 lb
W3330	33w x 30h x 12d	53 lb
W3630	36w x 30h x 12d	55 lb
W4230	42w x 30h x 12d	63 lb

WALL FRIDGE CABINET

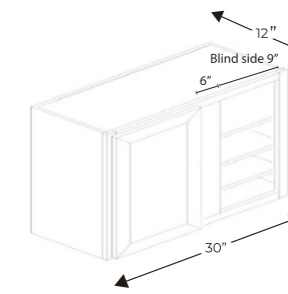
36" wide, 2 doors



NAME	SIZE	WT
W361224	36w x 12h x 24d	33 lb
W361524	36w x 15h x 24d	38 lb
W361824	36w x 18h x 24d	39 lb
W362124	36w x 21h x 24d	50 lb
W362424	36w x 24h x 24d	67 lb

WALL BLIND CORNER CABINET

1 door

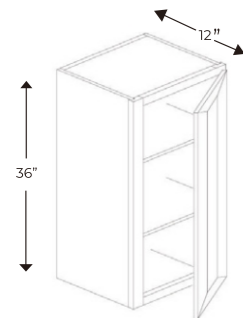


NAME	SIZE	WT
WBC3030	30w x 30h x 12d	44 lb
WBC3036	30w x 36h x 12d	50 lb
WBC3042	30w x 42h x 12d	57 lb

Door is 15" wide Specify left or right

WALL CABINET

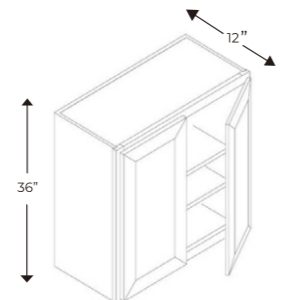
36" high, 1 door



NAME	SIZE	WT
W0936	09w x 36h x 12d	26 lb
W1236	12w x 36h x 12d	30 lb
W1536	15w x 36h x 12d	32 lb
W1836	18w x 36h x 12d	37 lb
W2136	21w x 36h x 12d	41 lb

WALL CABINET

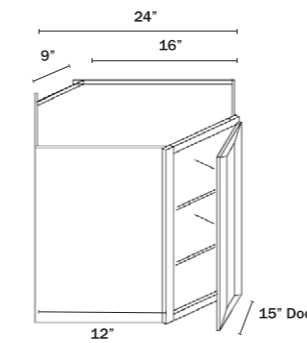
36" high, 2 doors



NAME	SIZE	WT
W2436	24w x 36h x 12d	46 lb
W2736	27w x 36h x 12d	48 lb
W3036	30w x 36h x 12d	54 lb
W3336	33w x 36h x 12d	58 lb
W3636	36w x 36h x 12d	62 lb
W4236	42w x 36h x 12d	69 lb

WALL DIAGONAL CORNER

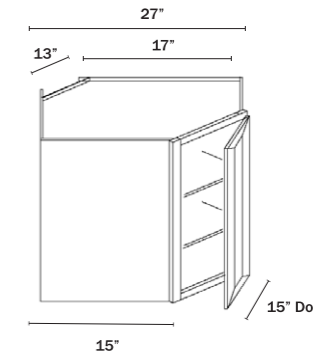
24" wide, 1 door



NAME	SIZE	WT
WDC2415	24w x 15h x 12d	31 lb
WDC2430	24w x 30h x 12d	58 lb
WDC2436	24w x 36h x 12d	64 lb
WDC2442	24w x 42h x 12d	75 lb

WALL DIAGONAL CORNER

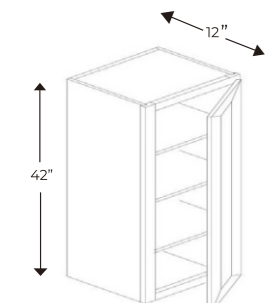
27" wide, 1 door



NAME	SIZE	WT
WDC273615	27w x 36h x 15d	77 lb
WDC274215	27w x 42h x 15d	90 lb

WALL CABINET

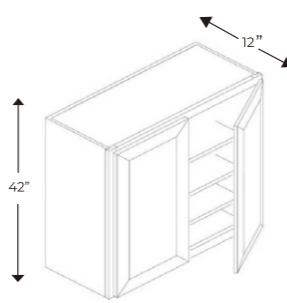
42" high, 1 door



NAME	SIZE	WT
W0942	09w x 42h x 12d	30 lb
W1242	12w x 42h x 12d	34 lb
W1542	15w x 42h x 12d	37 lb
W1842	18w x 42h x 12d	42 lb
W2142	21w x 42h x 12d	46 lb

WALL CABINET

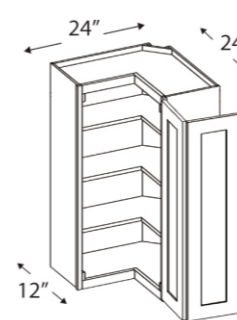
42" high, 2 doors



NAME	SIZE	WT
W2442	24w x 42h x 12d	52 lb
W2742	27w x 42h x 12d	58 lb
W3042	30w x 42h x 12d	63 lb
W3342	33w x 42h x 12d	66 lb
W3642	36w x 42h x 12d	72 lb
W4242	42w x 42h x 12d	81 lb

WALL EASY REACH CABINET

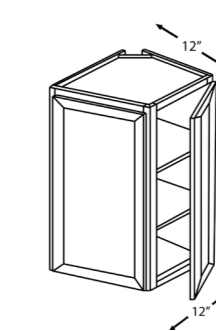
2 doors



NAME	SIZE	WT
WLS2430	24w x 30h x 12d	60 lb
WLS2436	24w x 36h x 12d	67 lb
WLS2442	24w x 42h x 12d	79 lb

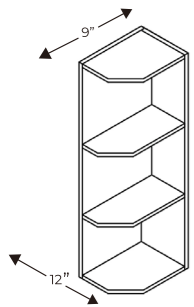
WALL END CABINET

2 doors



Name	Size	Wt
WEC1230	12w x 30h x 12d	26 lb
WEC1236	12w x 36h x 12d	30 lb
WEC1242	12w x 42h x 12d	42 lb

WALL END SHELVES

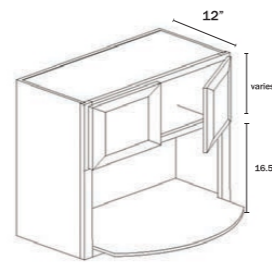


NAME	SIZE	WT
WES0930	09w x 30h x 12d	19 lb
WES0936	09w x 36h x 12d	20 lb
WES0942	09w x 42h x 12d	24 lb

Specify left or right

WALL MICROWAVE CABINET

— 24" high, 2 doors

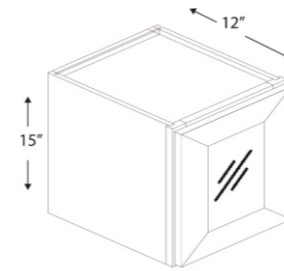


NAME	SIZE	WT
WMC2730	27w x 30h x 12d	39 lb
WMC2736	27w x 36h x 12d	45 lb
WMC2742	27w x 42h x 12d	49 lb

Interior opening: 24" w x 16 1/2" h
Maximum size microwave is 24"

WALL GLASS DOOR

— 15" high, 1 door

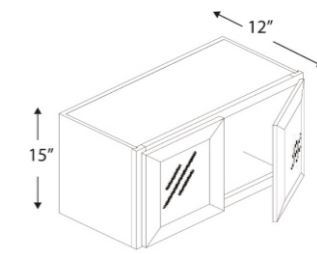


NAME	SIZE	WT
W1215GD	12w x 15h x 12d	12 lb
W1515GD	15w x 15h x 12d	15 lb
W1815GD	18w x 15h x 12d	18 lb
W2115GD	21w x 15h x 12d	20 lb

Accompanying wall cabinet must be ordered Frosted glass

WALL GLASS DOOR

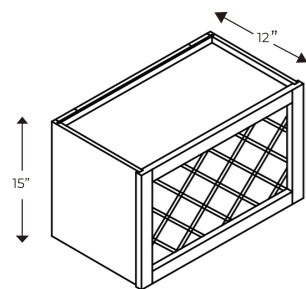
— 15" high, 2 doors



NAME	SIZE	WT
W2415GD	24w x 15h x 12d	23 lb
W2715GD	27w x 15h x 12d	25 lb
W3015GD	30w x 15h x 12d	28 lb
W3315GD	33w x 15h x 12d	28 lb
W3615GD	36w x 15h x 12d	31 lb

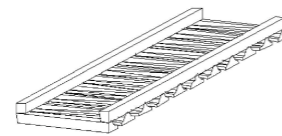
Accompanying wall cabinet must be ordered Frosted glass

WALL WINE RACK



NAME	SIZE	WT
WRC3015	30w x 15h x 12d	25 lb
WRC3615	36w x 15h x 12d	28 lb

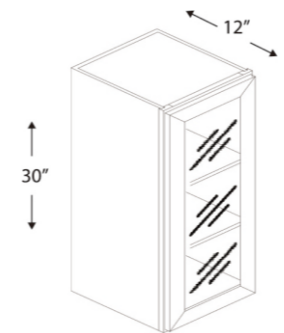
WALL WINE RACK



NAME	SIZE	WT
30GR	30w x 1.5h x 12d	7 lb
36GR	36w x 1.5h x 12d	7 lb

WALL GLASS DOOR

— 30" high, 1 door

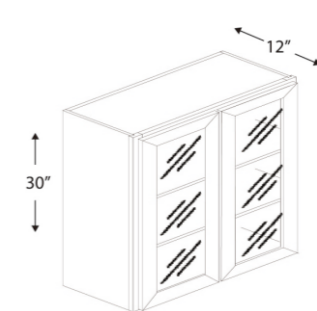


NAME	SIZE	WT
W1530GD	15w x 30h x 12d	30 lb
W1830GD	18w x 30h x 12d	34 lb

Accompanying wall cabinet must be ordered Frosted glass

WALL GLASS DOORS

— 30" high, 2 doors



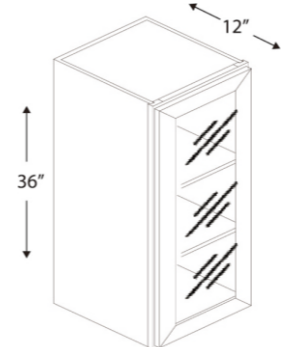
NAME	SIZE	WT
W2430GD	24w x 30h x 12d	40 lb
W3030GD	30w x 30h x 12d	50 lb
W3630GD	36w x 30h x 12d	60 lb

Accompanying wall cabinet must be ordered Frosted glass



WALL GLASS DOOR

— 36" high, 1 door

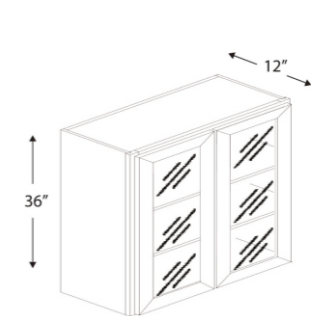


NAME	SIZE	WT
W1536GD	15w x 36h x 12d	14 lb
W1836GD	18w x 36h x 12d	14 lb

Accompanying wall cabinet must be ordered Frosted glass

WALL GLASS DOORS

— 36" high, 2 doors

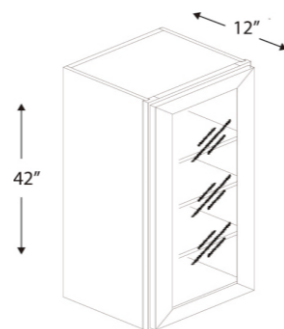


NAME	SIZE	WT
W2436GD	24w x 36h x 12d	50 lb
W3036GD	30w x 36h x 12d	58 lb
W3636GD	36w x 36h x 12d	66 lb

Accompanying wall cabinet must be ordered Frosted glass

WALL GLASS DOOR

— 42" high, 1 door

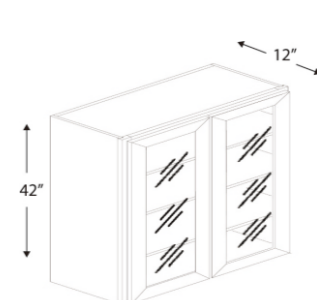


NAME	SIZE	WT
W1542GD	15w x 42h x 12d	44 lb
W1842GD	18w x 42h x 12d	61 lb

Accompanying wall cabinet must be ordered Frosted glass

WALL GLASS DOORS

— 42" high, 2 doors

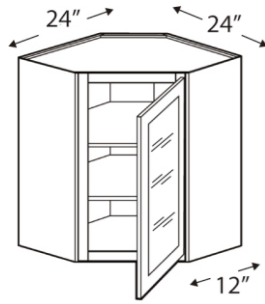


NAME	SIZE	WT
W2442GD	24w x 42h x 12d	66 lb
W3042GD	30w x 42h x 12d	72 lb
W3642GD	36w x 42h x 12d	79 lb

Accompanying wall cabinet must be ordered Frosted glass

WALL DIAGONAL GLASS CORNER DOOR

— 24" wide, 1 door

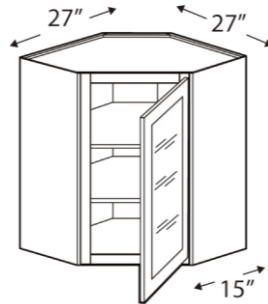


NAME	SIZE	WT
WDC2415GD	24w x 15h x 12d	31 lb
WDC2430GD	24w x 30h x 12d	64 lb
WDC2436GD	24w x 36h x 12d	70 lb
WDC2442GD	24w x 42h x 12d	80 lb

Accompanying wall cabinet must be ordered Frosted glass

WALL DIAGONAL GLASS CORNER DOOR

— 27" wide, 1 door



NAME	SIZE	WT
WDC273615GD	27w x 36h x 15d	82 lb
WDC274215GD	27w x 42h x 15d	100 lb

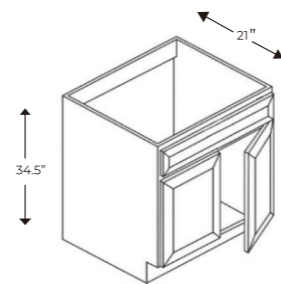
Accompanying wall cabinet must be ordered Frosted glass

VANITY CABINETS



VANITY SINK BASE CABINET

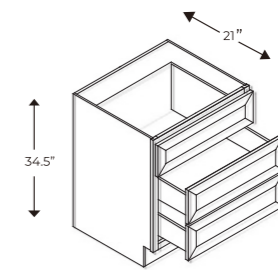
— 2 doors, 1 false drawer



NAME	SIZE	WT
VSB2421	24w x 34½h x 21d	42 lb
VSB2721	27w x 34½h x 21d	45 lb
VSB3021	30w x 34½h x 21d	48 lb
VSB3321*	33w x 34½h x 21d	51 lb
VSB3621	36w x 34½h x 21d	54 lb

VANITY SINK BASE CABINET

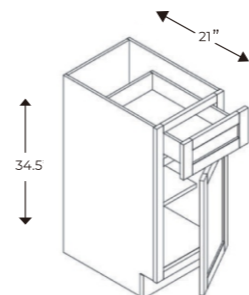
— 3 drawers



NAME	SIZE	WT
VDB12	12w x 34½h x 21d	69 lb
VDB15	15w x 34½h x 21d	74 lb
VDB18	18w x 34½h x 21d	81 lb
VDB21	21w x 34½h x 21d	86 lb
VDB24	24w x 34½h x 21d	94 lb

VANITY SINK BASE CABINET

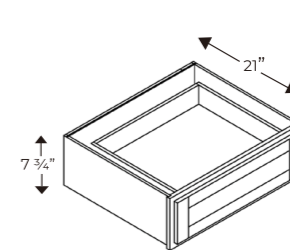
— 1 door, 1 drawer



NAME	SIZE	WT
VB12	12w x 34½h x 21d	47 lb
VB15	15w x 34½h x 24d	53 lb
VB18	18w x 34½h x 24d	56 lb

VANITY KNEE DRAWER

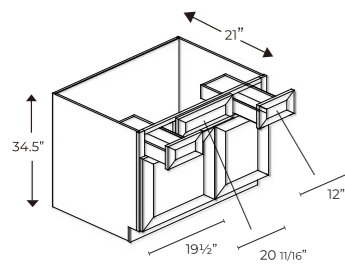
— 2 doors, 1 false drawer



NAME	SIZE	WT
KD24	24w x 7¾h x 21d	29 lb
KD30	30w x 7¾h x 21d	34 lb
KD36	36w x 7¾h x 21d	39 lb

VANITY SINK BASE COMBO 36"/42"

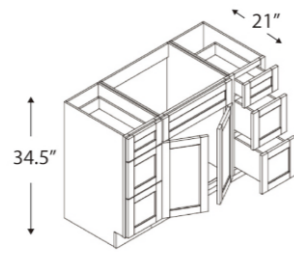
— 1 drawer left, 1 drawer right, sink centered



NAME	SIZE	WT
VSD4221	42w x 34 1/2h x 21d	88 lb

VANITY SINK BASE COMBO 48"/60"

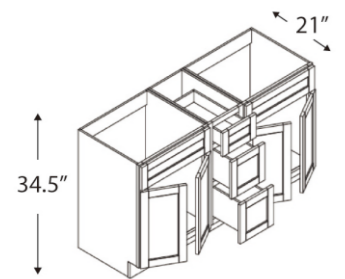
— 3 drawers left, 3 drawers right, sink centered



NAME	SIZE	WT
VSD4821D	48w x 34 1/2 h x 21d	145 lb
VSD6021D	60w x 34 1/2 h x 21d	164 lb

VANITY SINK BASE COMBO 60"

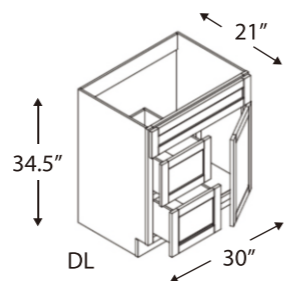
— 3 drawers middle, double sink



NAME	SIZE	WT
VSD6021DD	60w x 34 1/2 h x 21d	120 lb

VANITY SINK BASE COMBO 30"

— 1 door, 2 deep drawers

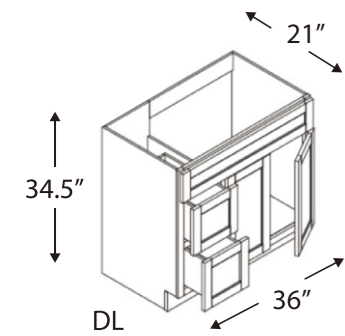


NAME	SIZE	WT
VSD3021DL	30w x 34 1/2 h x 21d	79 lb
VSD3021DR	30w x 34 1/2 h x 21d	79 lb

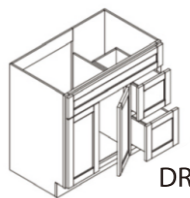


VANITY SINK BASE COMBO 36"

— 2 door, 2 drawers

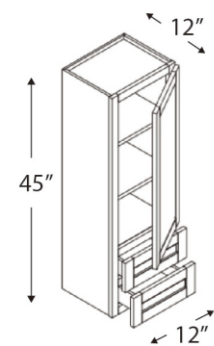


NAME	SIZE	WT
VSD3621DL	36w x 34 1/2 h x 21d	87 lb
VSD3621DR	36w x 34 1/2 h x 21d	87 lb



VANITY COUNTERTOP LINEN CABINET

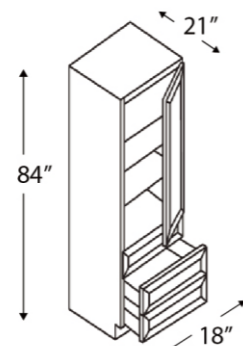
— 1 door, 2 drawers



NAME	SIZE	WT
DV1245	12w x 45h x 12d	45 lb

VANITY LINEN CABINET

— 1 door, 3 drawers



NAME	SIZE	WT
SVA188421	18w x 84h x 21d	149 lb

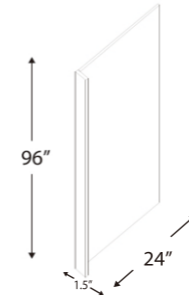


RARARTA

ACCESSORIES



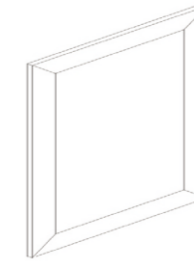
REFRIGERATOR RETURN PANEL



NAME	SIZE	WT
REP 1.5	24w x 96 h x 1½d	31 lb

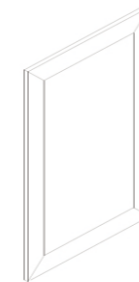
Refrigerator panel with 1.5" return filler

BASE FALSE DOOR



NAME	SIZE
BFD21	20½ w x 29¼ h x ¾ d
BFD24	23½ w x 29¼ h x ¾ d

WALL FALSE DOOR



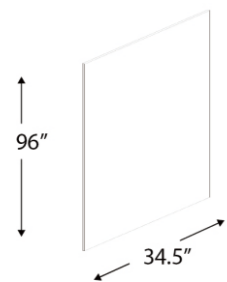
NAME	SIZE
FD1230	11½ w x 29½ h x ¾ d
FD1236	11½ w x 35½ h x ¾ d
FD1242	11½ w x 41½ h x ¾ d

CABINET FILLERS



NAME	SIZE	NAME	SIZE
WF330	3w x 30h x ¾ d	TF1.5x96	1.5w x 96h x ¾ d
WF336	3w x 36h x ¾ d	TF3x96	1.5w x 96h x ¾ d
WF342	3w x 42h x ¾ d	TF6x96	1.5w x 96h x ¾ d
WF630	6w x 30h x ¾ d		
WF636	6w x 36h x ¾ d		
WF642	6w x 42h x ¾ d		

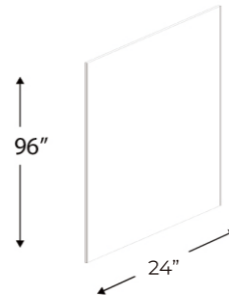
1/4" & 1/2" CABINET SKINS



NAME	SIZE	WT
FPNL-CS-¼	34 ½ w x 96 h x ¼ d	26 lb
FPNL-CS-½	34 ½ w x 96 h x ½ d	36 lb

Finished: matching color on one side

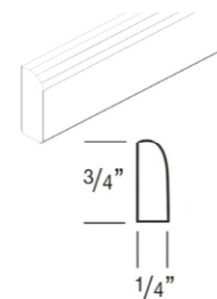
3/4" CABINET PANEL



NAME	SIZE	WT
FPNL-CP-¾	24w x 96h x ¾ d	26 lb

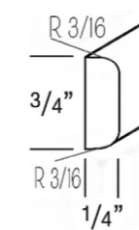
Finished: matching color on one side

SCRIBE MOULDING



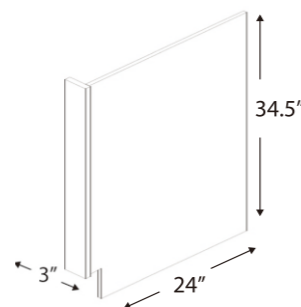
NAME	SIZE
SM8	96" Long

BATTEN MOULDING



NAME	SIZE
SDM8	96" Long

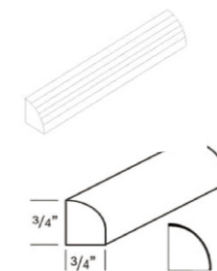
DISHWASHER RETURN PANEL



NAME	SIZE	WT
DWR	24w x 34½ h x 3d	11 lb

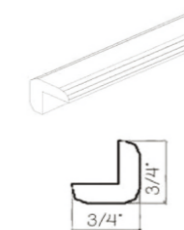
Dishwasher panel with 3" return filler

QUARTER ROUND MOULDING



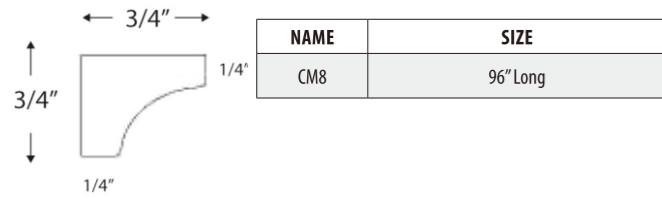
NAME	SIZE
QRM8	96" Long

OUTSIDE CORNER MOULDING

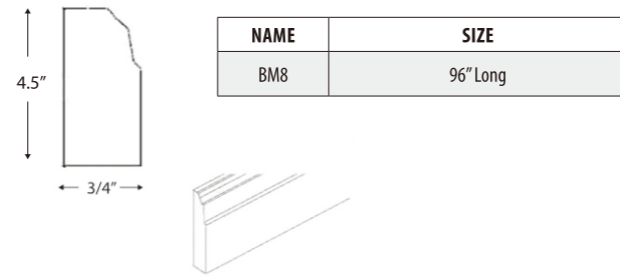


NAME	SIZE
OCM8	96" Long

COVE MOULDING

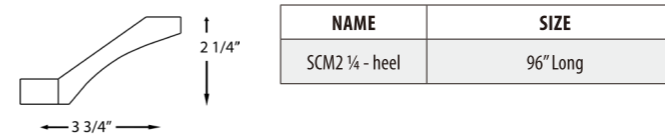


BASE MOULDING



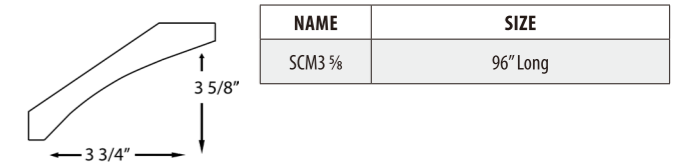
SHAKER CROWN MOULDING

2 1/4" Tall with heel - Top Mount

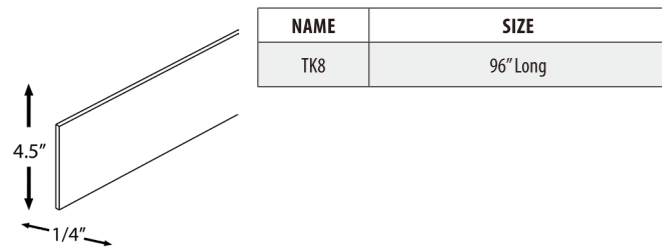


SHAKER CROWN MOULDING

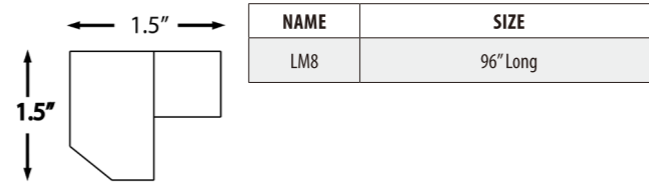
3 5/8" Tall



TOE KICK

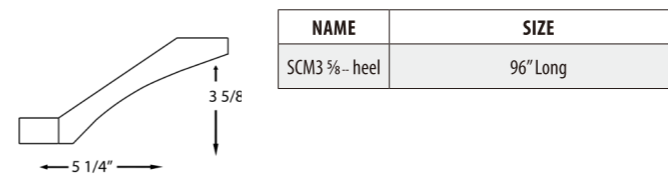


LIGHT RAIL MOULDING

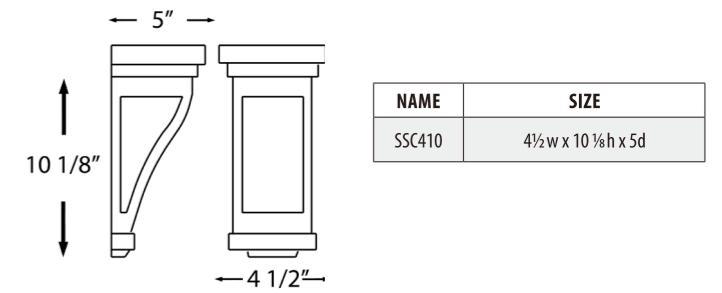


SHAKER CROWN MOULDING

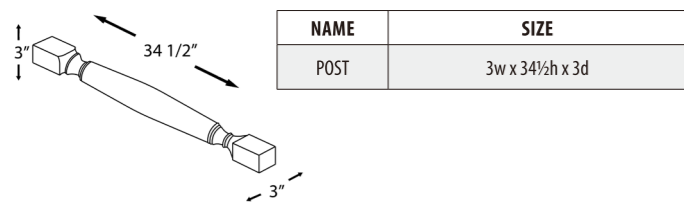
3 5/8" Tall with heel - Top Mount



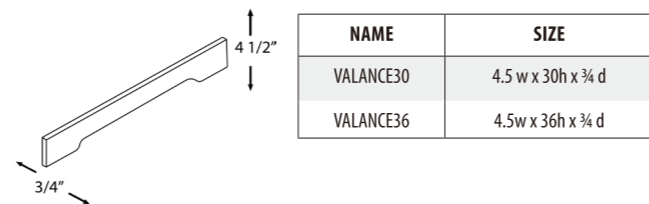
SHAKER SMALL CORBEL



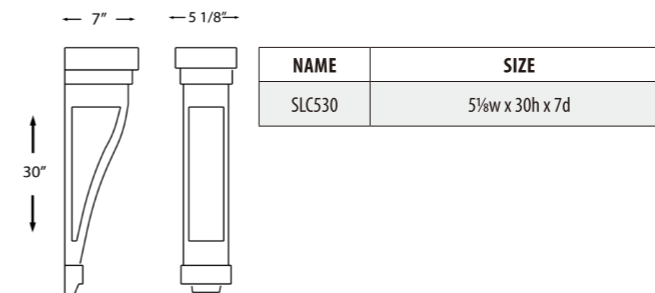
TURN POST



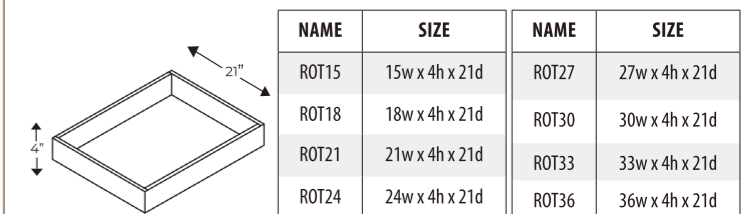
VALANCE



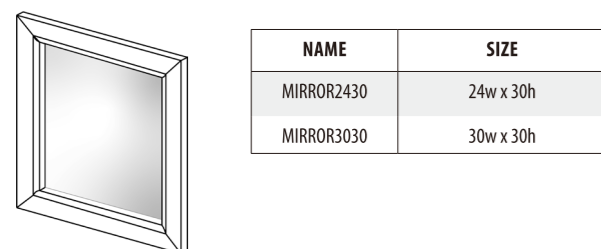
SHAKER LARGE CORBEL



ROLL OUT TRAYS

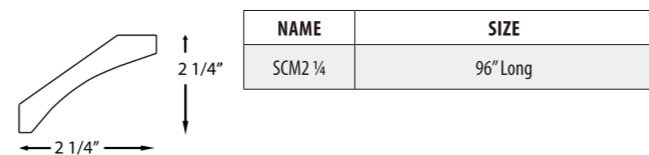


MIRROR

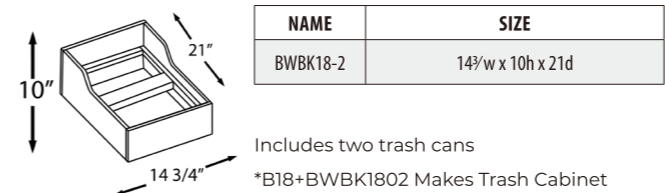


SHAKER CROWN MOULDING

2 1/4" Tall



TRASH CABINET KIT



TOUCH UP KIT



SPRAY PAINT



QUART OF PAINT



SUMPTUOUS WALNUT CABINETS FRAMELESS DOOR STYLE

Handcrafted for Your Dream Kitchen



LUMINOUS GLOSSY WHITE CABINETS

FRAMELESS DOOR STYLE

Handcrafted for Your Dream Kitchen



ETHEREAL MATTE GREY CABINETS

FRAMELESS DOOR STYLE

Handcrafted for Your Dream Kitchen



SHADOWY MATTE BLACK CABINETS

FRAMELESS DOOR STYLE

Handcrafted for Your Dream Kitchen

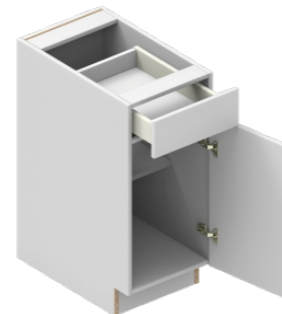


FRAMELESS CABINETS



BASE CABINET

— 1 door, 1 drawer



NAME	SIZE
B12	12w x 34 1/2h x 24d
B15	15w x 34 1/2h x 24d
B18	18w x 34 1/2h x 24d
B21	21w x 34 1/2h x 24d

Drawer height: 6"
Door height: 24"

BASE CABINET

— 1 full height door



NAME	SIZE
B09FHD	9w x 34 1/2h x 24d
B12FHD	12w x 34 1/2h x 24d
B15FHD	15w x 34 1/2h x 24d
B18FHD	18w x 34 1/2h x 24d
B21FHD	21w x 34 1/2h x 24d

Door height: 30" (full height)

BASE CABINET

— 2 doors, 1 drawer



NAME	SIZE
B24	24w x 34 1/2h x 24d
B27	27w x 34 1/2h x 24d
B30	30w x 34 1/2h x 24d
B33	33w x 34 1/2h x 24d
B36	36w x 34 1/2h x 24d

Drawer height: 6"
Door height: 24"

BASE CABINET

— 2 full height doors



NAME	SIZE
B27FHD	27w x 34 1/2h x 24d
B30FHD	30w x 34 1/2h x 24d
B33FHD	33w x 34 1/2h x 24d
B36FHD	36w x 34 1/2h x 24d

Door height: 30"

SINK BASE CABINET

1 false drawer, 2 doors



NAME	SIZE
SB30	30w x 34 1/2h x 24d
SB33	33w x 34 1/2h x 24d
SB36	36w x 34 1/2h x 24d
SB39	39w x 34 1/2h x 24d

False drawer height: 6"
Door height: 24"

FARMHOUSE SINK BASE CABINET

2 doors



NAME	SIZE
FSM33	33w x 34 1/2h x 24d
FSM36	36w x 34 1/2h x 24d

Top panel height: 12"
Door height: 18"

BASE BLIND CORNER CABINET

1 door



NAME	SIZE
BBC36FHD-15	36w x 34 1/2h x 24d
BBC36FHD-18	42w x 34 1/2h x 24d



Optional BBC Tray
on page 54

36" Cabinet - door width: 15"
and 6" pull required

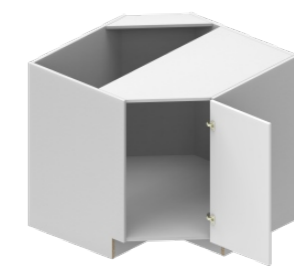
42" Cabinet - door width: 18"
and 3" pull required

1 Shelf included, option for upgrade
Center filler: 6" wide



CORNER SINK BASE CABINET

1 door



NAME	SIZE
CSB36	36w x 34 1/2h x 36d

Door height: 16" (full height)

BASE CABINET

3 drawers



NAME	SIZE
DB12-3	12w x 34 1/2h x 24d
DB15-3	15w x 34 1/2h x 24d
DB18-3	18w x 34 1/2h x 24d
DB21-3	21w x 34 1/2h x 24d
DB24-3	24w x 34 1/2h x 24d
DB27-3	27w x 34 1/2h x 24d
DB30-3	30w x 34 1/2h x 24d
DB33-3	33w x 34 1/2h x 24d
DB36-3	36w x 34 1/2h x 24d

Top drawer height: 6"
Middle & bottom
drawer height: 12"

BASE CABINET

2 drawers



NAME	SIZE
2DB24	24w x 34 1/2h x 24d
2DB27	27w x 34 1/2h x 24d
2DB30	30w x 34 1/2h x 24d
2DB33	33w x 34 1/2h x 24d
2DB36	36w x 34 1/2h x 24d

Drawers equal height: 15"

MICROWAVE BASE CABINET

1 drawer



NAME	SIZE
BMC27	27w x 34 1/2h x 24d
BMC30	30w x 34 1/2h x 24d

Bottom drawer height: 12"
Appliance space height: 16"-18"

Note: If we are assembling this cabinet, we need to know
the space requirement for the appliance.

BASE TRASH CABINET

1 door



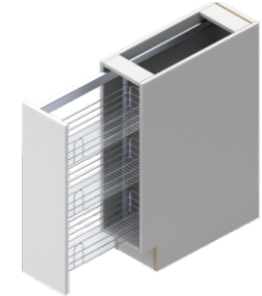
NAME	SIZE
BWBK18	18w x 34 1/2h x 36d



Door height: 30" (full height)
2 trash cans with lids included

BASE SPICE RACK CABINET

1 door



NAME	SIZE
SP09	09w x 34 1/2h x 24d
SP12	12w x 34 1/2h x 24d



Door height: 30" (full height)
Hardware included
Specify left or right hardware

GLASS DOOR CABINETS

Glass doors are available
as an option—great for
showcasing dishware or
adding a light, airy touch to
your design.

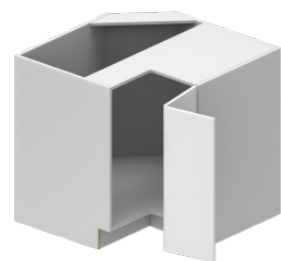
SEE PAGE 51

ACCESSORIES

Find stylish accessories like
floating shelves and roll-out
trays on **page 51**—perfect
for adding extra function and
flair to your space.

BASE EASY REACH CABINET

1 door



NAME	SIZE
BER33	33w x 34 1/2h x 24d
BER36	36w x 34 1/2h x 24d

Optional BLS36
Tray on page 54

1 Shelf included,
option for upgrade

Hinge open angle is 155°
(box door) and 270° (door-door)



WALL CABINET

30" high, 1 door



NAME	SIZE
W0930	09w x 30h x 12d
W1230	12w x 30h x 12d
W1530	15w x 30h x 12d
W1830	18w x 30h x 12d
W2130	21w x 30h x 12d

2 adjustable shelves included

WALL CABINET

30" high, 2 doors

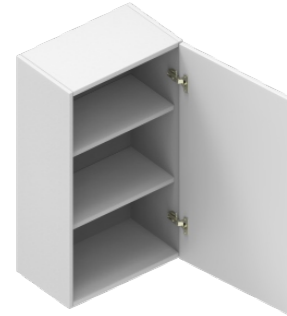


NAME	SIZE
W2430	24w x 30h x 12d
W2730	27w x 30h x 12d
W3030	30w x 30h x 12d
W3330	33w x 30h x 12d
W3630	36w x 30h x 12d

2 adjustable shelves included

WALL CABINET

36" high, 1 door



NAME	SIZE
W0936	09w x 36h x 12d
W1236	12w x 36h x 12d
W1536	15w x 36h x 12d
W1836	18w x 36h x 12d
W2136	21w x 36h x 12d

2 adjustable shelves included

WALL CABINET

36" high, 2 doors



NAME	SIZE
W2436	24w x 30h x 12d
W2736	27w x 30h x 12d
W3036	30w x 30h x 12d
W33836	33w x 30h x 12d
W3636	36w x 30h x 12d

2 adjustable shelves included

EASY REACH CABINE

30", 36" high, 1 door



NAME	SIZE
WER2430	24w x 30h x 24d
WER2436	24w x 36h x 24d

2 adjustable shelves included
2 attached doors
Hinge open angle: 155° (box-door) and 270° (door-door)

EASY REACH CABINET

42" high, 1 door



NAME	SIZE
WER2442	24w x 42h x 24d

3 adjustable shelves included
2 attached doors
Hinge open angle: 155° (box-door) and 270° (door-door)

WALL CABINET

42" high, 1 door



NAME	SIZE
W0942	09w x 42h x 12d
W1242	12w x 42h x 12d
W1542	15w x 42h x 12d
W1842	18w x 42h x 12d
W2142	21w x 42h x 12d

3 adjustable shelves included

WALL CABINET

42" high, 2 doors



NAME	SIZE
W2442	24w x 42h x 12d
W2742	27w x 42h x 12d
W3042	30w x 42h x 12d
W3342	33w x 42h x 12d
W3642	36w x 42h x 12d

3 adjustable shelves included

WALL CABINET

2 doors



NAME	SIZE
W3012	30w x 12h x 12d
W3015	30w x 15h x 12d
W3018	30w x 18h x 12d
W3021	30w x 21h x 12d
W3612	36w x 12h x 12d
W3615	36w x 15h x 12d
W3618	36w x 18h x 12d
W3621	36w x 21h x 12d

WALL CABINET

24" high, 2 doors



NAME	SIZE
W3024	30w x 24h x 12d
W3624	36w x 24h x 12d

1 adjustable shelf included

BLIND CORNER CABINET

30", 36" high, 1 door



NAME	SIZE
WBC3030	30w x 30h x 12d
WBC3036	30w x 36h x 12d

2 adjustable shelves included
Door width: 15"
Filler width: 6"

BLIND CORNER CABINET

42" high, 1 door



NAME	SIZE
WBC3042	30w x 42h x 12d

2 adjustable shelves included
Door width: 15"
Filler width: 6"

WALL CABINET

24" depth, 2 doors



NAME	SIZE
W301224	30w x 12h x 24d
W301524	30w x 15h x 24d
W301824	30w x 18h x 24d
W302124	30w x 21h x 24d
W361224	36w x 12h x 24d
W361524	36w x 15h x 24d
W361824	36w x 18h x 24d
W3621	36w x 21h x 24d

WALL CABINET

24" depth, 24" high, 2 doors



NAME	SIZE
W302424	30w x 24h x 24d
W362424	36w x 24h x 24d

1 adjustable shelf included

DIAGONAL CABINET

30", 36" high, 1 door



NAME	SIZE
WDC2430	24w x 30h x 24d
WDC2436	24w x 36h x 24d

2 adjustable shelves included
Door width: 16"
Hinge open angle: 45°

DIAGONAL CABINET

42" high, 1 door



NAME	SIZE
WDC2442	24w x 42h x 24d

3 adjustable shelves included
Door width: 16"
Hinge open angle: 45°

WALL SINGLE LIFT CABINET

1 door



NAME	SIZE
WSL3012	30w x 12h x 12d
WSL3015	30w x 15h x 12d
WSL3018	30w x 18h x 12d
WSL3612	36w x 12h x 12d
WSL3615	36w x 15h x 12d
WSL3618	36w x 18h x 12d

1 lift style door

WALL BI-FOLDING CABINET

1 door

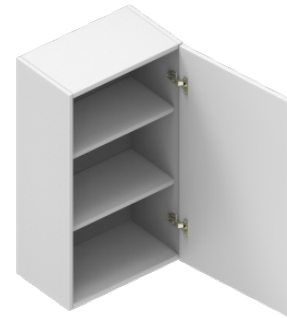


NAME	SIZE
WBF3030	30w x 30h x 12d
WBF3036	30w x 36h x 12d
WBF3630	36w x 30h x 12d
WBF3636	36w x 36h x 12d

Attached, fold-up style doors, equally divided

WALL CABINET

36" high, 1 door



NAME	SIZE
W0936	09w x 36h x 12d
W1236	12w x 36h x 12d
W1536	15w x 36h x 12d
W1836	18w x 36h x 12d
W2136	21w x 36h x 12d

2 adjustable shelves included

WALL CABINET

36" high, 2 doors



NAME	SIZE
W2436	24w x 30h x 12d
W2736	27w x 30h x 12d
W3036	30w x 30h x 12d
W33836	33w x 30h x 12d
W3636	36w x 30h x 12d

2 adjustable shelves included

PANTRY CABINET

2 doors



NAME	SIZE	DOOR SIZE
PC1884	18w x 84h x 24d	TOP: 30"h
		BOTTOM: 49.5"h
PC1890	18w x 90h x 24d	TOP: 36"h
		BOTTOM: 49.5"h

Full depth shelves
4 adjustable shelves, 1 fixed shelf
Option for upgrade, adding accessories

PANTRY CABINET

2 doors



NAME	SIZE	DOOR SIZE
PC1896	18w x 96h x 24d	TOP: 42"h
		BOTTOM: 49.5"h

Full depth shelves
5 adjustable shelves, 1 fixed shelf
Option for upgrade, adding accessories

WALL CABINET

42" high, 1 door



NAME	SIZE
W0942	09w x 42h x 12d
W1242	12w x 42h x 12d
W1542	15w x 42h x 12d
W1842	18w x 42h x 12d
W2142	21w x 42h x 12d

3 adjustable shelves included

WALL CABINET

42" high, 2 doors



NAME	SIZE
W2442	24w x 42h x 12d
W2742	27w x 42h x 12d
W3042	30w x 42h x 12d
W3342	33w x 42h x 12d
W3642	36w x 42h x 12d

3 adjustable shelves included

MICROWAVE & OVEN CABINET

2 doors, 2 drawers



NAME	SIZE	DRAWER SIZE
MOC3084	30w x 84h x 24d	TOP: 12"h
		BOTTOM: 12"h
MOC3090	30w x 90h x 24d	TOP: 18"h
		BOTTOM: 12"h
MOC3096	30w x 96h x 24d	TOP: 24"h
		BOTTOM: 12"h

Double fillers
Opening: 28.5"w x 43.25"h
2 pieces of filler included: 3" x 30"
for cutting as per appliance dimensions

DOUBLE OVEN CABINET

2 doors, 1 drawer



NAME	SIZE	DOOR/DRAWER SIZE
DOC3084	30w x 84h x 24d	DOOR: 12"h
		DRAWER: 12"h
DOC3090	30w x 90h x 24d	DOOR: 18"h
		DRAWER: 12"h
DOC3096	30w x 96h x 24d	DOOR: 24"h
		BDRAWER: 12"h

Double fillers
Opening: 28.5"w x 55.25"h
Filler not included

BLIND CORNER CABINET

30", 36" high, 1 door



NAME	SIZE
WBC3030	30w x 30h x 12d
WBC3036	30w x 36h x 12d

2 adjustable shelves included
Door width: 15"
Filler width: 6"

BLIND CORNER CABINET

42" high, 1 door



NAME	SIZE
WBC3042	30w x 42h x 12d

2 adjustable shelves included
Door width: 15"
Filler width: 6"

DIAGONAL CABINET

30", 36" high, 1 door



NAME	SIZE
WDC2430	24w x 30h x 24d
WDC2436	24w x 36h x 24d

2 adjustable shelves included
Door width: 16"
Hinge open angle: 45°

DIAGONAL CABINET

42" high, 1 door



NAME	SIZE
WDC2442	24w x 42h x 24d

3 adjustable shelves included
Door width: 16"
Hinge open angle: 45°





FLOATING VANITY CABINET

2 doors



NAME	SIZE
FVB24	24w x 24h x 21d
FVB27	27w x 24h x 21d
FVB30	30w x 24h x 21d
FVB33	33w x 24h x 21d
FVB36	36w x 24h x 21d

Door height: 30" (full height)
Alternative by corresponding kitchen cabinet doors
Brackets will be provided

FLOATING VANITY CABINET

2 drawers



NAME	SIZE
FVDB12	12w x 24h x 21d
FVDB15	15w x 24h x 21d
FVDB18	18w x 24h x 21d
FVDB21	21w x 24h x 21d
FVDB24	24w x 24h x 21d
FVDB27	27w x 24h x 21d
FVDB30	30w x 24h x 21d
FVDB33	33w x 24h x 21d
FVDB36	36w x 24h x 21d

Drawer height: 12" (equal height)
Brackets will be provided

FLOATING VANITY SINK CABINET

2 drawers



NAME	SIZE
FVSD24	24w x 24h x 21d
FVSD30	30w x 24h x 21d
FVSD36	36w x 24h x 21d

Drawer height: 12" (equal height)
Two U-shaped accessories
Alternative by corresponding kitchen cabinet doors
Brackets will be provided

VANITY BASE CABINET

1 door, 1 drawer



NAME	SIZE
VB12	12w x 34 1/2h x 21d
VB15	15w x 34 1/2h x 21d
VB18	18w x 34 1/2h x 21d
VB21	21w x 34 1/2h x 21d

Drawer height: 6"
Door height: 24"
Alternative by corresponding kitchen

VANITY BASE CABINET

1 full height door



NAME	SIZE
VB12FHD	12w x 34 1/2h x 21d
VB15FHD	15w x 34 1/2h x 21d
VB18FHD	18w x 34 1/2h x 21d
VB21FHD	21w x 34 1/2h x 21d

Door height: 30" (full height)
Alternative by corresponding kitchen cabinet doors

VANITY BASE CABINET

2 doors, 1 false drawer



NAME	SIZE
VS824	24w x 34 1/2h x 21d
VS827	27w x 34 1/2h x 21d
VS830	30w x 34 1/2h x 21d
VS833	33w x 34 1/2h x 21d
VS836	36w x 34 1/2h x 21d

False drawer height: 6"
Door height: 24"
Alternative by corresponding kitchen cabinet doors

VANITY BASE CABINET

3 drawers



NAME	SIZE
VDB12-3	12w x 34 1/2h x 21d
VDB15-3	15w x 34 1/2h x 21d
VDB18-3	18w x 34 1/2h x 21d
VDB21-3	21w x 34 1/2h x 21d
VDB24-3	24w x 34 1/2h x 21d

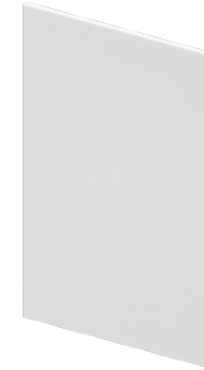
Top drawer height: 6"
Middle & bottom drawer height: 12"
Alternative by corresponding kitchen cabinet doors





VANITY FULL HEIGHT DOOR MATCH END PANEL

NAME	SIZE
VFD22	21 7/8" w x 34 1/2" h x 3/4" d



Use for bath unit
Same material as door panel,
3/4" thickness

FLOATING VANITY FULL HEIGHT DOOR MATCH END PANEL

NAME	SIZE
FVFD22	21 7/8" w x 24" h x 3/4" d



Use for Floating Vanity
Same material as door panel,
3/4" thickness

BASE FULL HEIGHT DOOR MATCH END PANEL

NAME	SIZE
BFD25	24 7/8" w x 34 1/2" h x 3/4" d



Use for kitchen base unit
Same material as door panel,
3/4" thickness

WALL FULL HEIGHT DOOR MATCH END PANEL

NAME	SIZE
FD1330	12 7/8" w x 30" h x 3/4" d
FD1336	12 7/8" w x 36" h x 3/4" d
FD1342	12 7/8" w x 42" h x 3/4" d



Use for kitchen wall unit
Same material as door panel,
3/4" thickness

VANITY BASE CABINET

1 door, 1 drawer



NAME	SIZE
VB12	12w x 34 1/2h x 21d
VB15	15w x 34 1/2h x 21d
VB18	18w x 34 1/2h x 21d
VB21	21w x 34 1/2h x 21d

Drawer height: 6"
Door height: 24"
Alternative by corresponding kitchen

VANITY BASE CABINET

1 full height door



NAME	SIZE
VB12FHD	12w x 34 1/2h x 21d
VB15FHD	15w x 34 1/2h x 21d
VB18FHD	18w x 34 1/2h x 21d
VB21FHD	21w x 34 1/2h x 21d

Door height: 30" (full height)
Alternative by corresponding kitchen
cabinet doors

VANITY BASE CABINET

2 doors, 1 false drawer



NAME	SIZE
VS824	24w x 34 1/2h x 21d
VS827	27w x 34 1/2h x 21d
VS830	30w x 34 1/2h x 21d
VS833	33w x 34 1/2h x 21d
VS836	36w x 34 1/2h x 21d

False drawer height: 6"
Door height: 24"
Alternative by corresponding kitchen
cabinet doors

VANITY BASE CABINET

3 drawers



NAME	SIZE
VDB12-3	12w x 34 1/2h x 21d
VDB15-3	15w x 34 1/2h x 21d
VDB18-3	18w x 34 1/2h x 21d
VDB21-3	21w x 34 1/2h x 21d
VDB24-3	24w x 34 1/2h x 21d

Top drawer height: 6"
Middle & bottom drawer height: 12"
Alternative by corresponding kitchen
cabinet doors

REFRIGERATOR END PANEL

NAME	SIZE
REP8425	24 7/8" w x 30" h x 3/4" d
REP9025	24 7/8" w x 36" h x 3/4" d
REP9625	24 7/8" w x 42" h x 3/4" d



Use for refrigerator position
Same material as door panel,
3/4" thickness

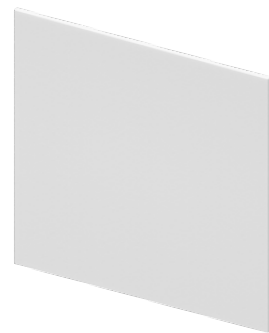
DISHWASHER END PANEL

NAME	SIZE
DWR	3 w x 34 1/2 h x 24 d



Use for dishwasher position
Same material as door panel
Left & right reversible

BASE SKIN PANEL



NAME	SIZE
PNL-34.5-26-3/4	25 1/16 w x 34 1/2 h x 3/4 d

Use for kitchen
Same material as door panel,
3/4" thickness

BASE SKIN PANEL



NAME	SIZE
PNL-34.5-96-3/4	34 1/2 w x 96 h x 3/4 d

Use for kitchen island or peninsula
Same material as door panel,
3/4" thickness

GLASS DOOR



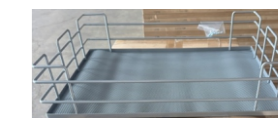
NAME	SIZE
GD1230	12w x 30h x 12d
GD1530	15w x 30h x 12d
GD1830	18w x 30h x 12d
GD-WDC2430	24w x 30h x 12d
GD1236	12w x 36h x 12d
GD1536	15w x 36h x 12d
GD1836	18w x 36h x 12d
GD-WDC2436	24w x 36h x 12d
GD1242	12w x 42h x 12d
GD1542	15w x 42h x 12d
GD1842	18w x 42h x 12d
GD-WDC2442	24w x 42h x 12d

Glass door is an accessory, box is not included
Handleless Bottom Panel needs to be purchased when ordering the glass door

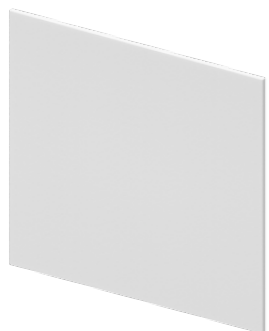
ROLL OUT TRAYS



NAME	SIZE
ROT18	14.3 w x 4.65h x 19.78 d
ROT24	20.3 w x 4.65h x 19.78 d
ROT30	26.3 w x 4.65h x 19.78 d
ROT36	32.3 w x 4.65h x 19.78 d



BASE SKIN PANEL FOR ISLAND



NAME	SIZE
PNL-34.5-36-3/4	36 w x 34 1/2 h x 3/4 d

Use for kitchen
Same material as door panel,
3/4" thickness
Island example: 24" deep +
12" deep cabinets back to back

TALL FILLER



NAME	SIZE
TF3-96	3 w x 91 1/2 h x 3/4 d
TF6-96	6 w x 91 1/2 h x 3/4 d

Same material as door panel,
3/4" thickness
Each filler comes with two pieces:
1) the finished color filler piece
2) an universal cleat withch acts as
the nailer. This may not be the
same finish.

HANDLELESS BOTTOM PANEL



NAME	SIZE
W12 handleless bottom panel	10.59w x .71h x 11.18d
W15 handleless bottom panel	13.58w x .71h x 11.18d
W18 handleless bottom panel	16.59w x .71h x 11.18d
W24 handleless bottom panel	22.59w x .71h x 11.18d
W30 handleless bottom panel	28.59w x .71h x 11.18d
W36 handleless bottom panel	34.59w x .71h x 11.18d
WDC handleless bottom panel	22.60w x .71h x 11.18d

FLOATING SHELVES



NAME	SIZE
FS30	30 w x 1.46 h x 12.08 d
FS36	36 w x 1.46h x 12.08 d

WALL FILLER



NAME	SIZE
WF330	3w x 29 1/2 h x 3/4 d
WF336	3w x 35 1/2 h x 3/4 d
WF342	3w x 41 1/2 h x 3/4 d
WF630	6w x 29 1/2 h x 3/4 d
WF636	6w x 35 1/2 h x 3/4 d
WF642	6w x 41 1/2 h x 3/4 d

Same material as door panel,
3/4" thickness

TOE KICK



NAME	SIZE
TK8	96 w x 4 1/2 h x 1/4 d

NOTE
All Panels Are
Applied Panels

You will need to account
for an additional 3/4" when
adding a finished panel.
They do not replace the
white panel the box is
constructed with.

BASE EASY REACH CABINET TRAY



NAME	SIZE
BLS-36-tray	

BASE BLIND CORNER CABINET TRAY



NAME	SIZE
BBC-tray-L	
BBC-tray-R	

CLOSETS



OAK



KANAS OAK



WALNUT



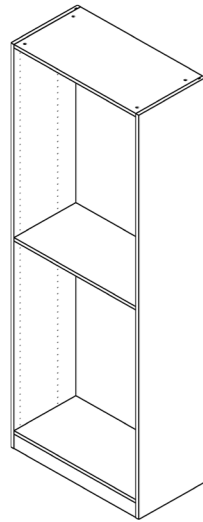
WHITE

Looking for a sleek, modern closet without the custom price tag or long lead times? Our modular RTA (ready-to-assemble) closet system offers a smart, stylish alternative to traditional custom closets. With flexible configurations, clean contemporary design, and quick nationwide shipping, it's the perfect solution for builders, designers, and homeowners who want high-end looks with practical convenience.



CLOSET'S COMPONENT DESCRIPTION	
1	Toe Kick: Thickness=3/4", Height=3" P2 Level Particle Board.
2	Bottom Panel: Thickness=3/4", P2 Level Particle Board , Connected by Cam Lock + Wooden Dowel.
3	High Drawer: Drawer Front's Height 12 5/8", Shallow Drawer's Depth 11 13/16", Deep Drawer's Depth 20", with Under Mounted Drawer Glide.
4	Low drawer: Drawer Front's Height 6 1/4", Shallow Drawer's Depth 11 13/16", Deep Drawer's Depth 20", with Under Mounted Drawer Glide.
5	Shelf: Thickness=3/4", P2 Level Particle Board , Install with Shelf support.
6	Shoe Shelf: Thickness=3/4", P2 Level Particle Board , Front Aluminum Baffle, Install with Shelf support.
7	Back Panel: Thickness=3/8", P2 Level Particle Board,
8	Hanging Rod: Install with Zinc Alloy Support Base, The Rod with PVC Anti Slip Strips, Surface Water-based Paint Treatment.
9	Top Panel: Thickness=3/4", P2 Level Particle Board , Connected by Cam Lock + Wooden Dowel.
10	Back Enforced Rail: Thickness=3/4", Height=3", P2 Level Particle Board.
11	Left Side Panel: Thickness=3/4", P2 Level Particle Board, Shallow Side Panel 15 5/8", Deep Side Panel 24".
12	Right Side Panel: Thickness=3/4", P2 Level Particle Board, Shallow Side Panel 15 5/8", Deep Side Panel 24".

CLOSET - 15 5/8" DEPTH



NAME	WITH LED LIGHTING	SIZE
C1584F	C1584F-LED	15w x 84h x 15 5/8 d
C1884F	C1884F-LED	18w x 84h x 15 5/8 d
C2184F	C2184F-LED	21w x 84h x 15 5/8 d
C2484F	C2484F-LED	24w x 84h x 15 5/8 d
C3084F	C3084F-LED	30w x 84h x 15 5/8 d
C3684F	C3684F-LED	36w x 84h x 15 5/8 d

1 adjustable shelf included
Clothes hanging rails, movable shelves, and drawers can be added
30" and 36" widths can be equipped with functional hardware.

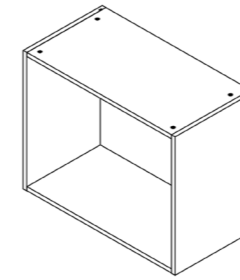
Package includes:

CTN 1: Left & right side panels

CTN 2: Top & bottom panel, 1 shelf, 3 enforced rail, 1 TK, 1 basic hardware

CTN 3: Back panel

TOP CABINET - 15 5/8" DEPTH



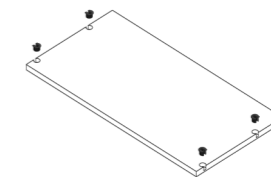
NAME	SIZE
C1521	15w x 84h x 15 5/8 d
C1821	18w x 84h x 15 5/8 d
C2121	21w x 84h x 15 5/8 d
C2421	24w x 84h x 15 5/8 d
C3021	30w x 84h x 15 5/8 d
C3621	36w x 84h x 15 5/8 d

Place unit on top of closet with same width.
Use filler to fill the remaining space to fit a 9' floor height.

Package includes:

1 set per CTN

SHELF - 15 5/8" DEPTH



NAME	SIZE
S15	15w x 14 1/2 h x 3/4 d
S18	18w x 14 1/2 h x 3/4 d
S21	21w x 14 1/2 h x 3/4 d
S24	24w x 14 1/2 h x 3/4 d
S30	30w x 14 1/2 h x 3/4 d
S36	36w x 14 1/2 h x 3/4 d

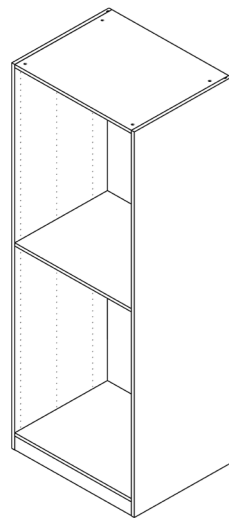
Exchangeable shelf for 15 5/8" depth units.
Item number refers to fit width.

Package Includes:

S15 & S18: 3 sets per CTN

S21 - S36: 1 set per CTN

CLOSET - 24" DEPTH



NAME	WITH LED LIGHTING	SIZE
C1584DF	C1584DF-LED	15w x 84h x 24 d
C1884DF	C1884DF-LED	18w x 84h x 24 d
C2184DF	C2184DF-LED	21w x 84h x 24 d
C2484DF	C2484DF-LED	24w x 84h x 24 d
C3084DF	C3084DF-LED	30w x 84h x 24 d
C3684DF	C3684DF-LED	36w x 84h x 24 d

1 adjustable shelf included
Clothes hanging rails, movable shelves, and drawers can be added
30" and 36" widths can be equipped with functional hardware.

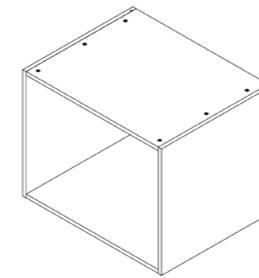
Package includes:

CTN 1: Left & right side panels

CTN 2: Top & bottom panel, 1 shelf, 3 enforced rail, 1 TK, 1 basic hardware

CTN 3: Back panel

TOP CABINET - 24" DEPTH



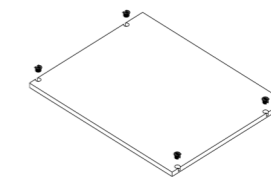
NAME	SIZE
C1521D	15w x 21h x 24d
C1821D	18w x 21h x 24d
C2121D	21w x 21h x 24d
C2421D	24w x 21h x 24d
C3021D	30w x 21h x 24d
C3621D	36w x 21h x 24d

Place unit on top of closet with same width.
Use filler to fill the remaining space to fit a 9' floor height.

Package includes:

1 set per CTN

SHELF - 24" DEPTH



NAME	SIZE
S15D	15w x 22 5/8 h x 3/4 d
S18D	18w x 22 5/8 h x 3/4 d
S21D	21w x 22 5/8 h x 3/4 d
S24D	24w x 22 5/8 h x 3/4 d
S30D	30w x 22 5/8 h x 3/4 d
S36D	36w x 22 5/8 h x 3/4 d

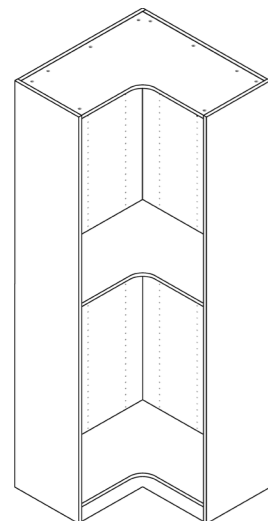
Exchangeable shelf for 24" depth units.
Item number refers to fit width.

Package Includes:

S15D & S18D: 3 sets per CTN

S21D - S36D: 1 set per CTN

CLOSET - CORNER UNIT



NAME	WITH LED LIGHTING	SIZE
ER3084F	ER3084F-LED	30w x 84h x 15 5/8 d
ER3684F	ER3684F-LED	36w x 84h x 15 5/8 d

Pull unit out 8" - 9" to accommodate a 24" deep closet

1 adjustable shelf included

Clothes hanging rails, movable shelves, and drawers can be added

Package includes:

CTN 1: Left & right side panels

CTN 2: Top & bottom panel, 1 shelf, 2 TK, 1 basic hardware

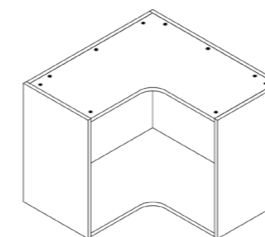
CTN 3: 2 back panels (thickness 3/4")

UPGRADE WITH LED LIGHTS

Enhance your closet design with the option to upgrade to LED lighting. This sleek, low-profile feature adds both function and ambiance. A smart upgrade for a polished, high-end finish.

SEE PAGE 57

TOP CABINET - CORNER UNIT



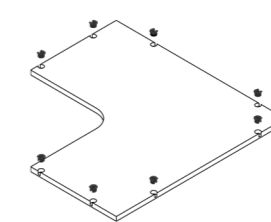
NAME	SIZE
ER3021	30w x 21h x 15 5/8 d
ER3621	36w x 21h x 15 5/8 d

Pull unit out 8" - 9" to accommodate a 24" deep closet
Place unit on top of closet with same width.
Use filler to fill the remaining space to fit a 9' floor height.

Package includes:

1 set per CTN

SHELF - CORNER UNIT



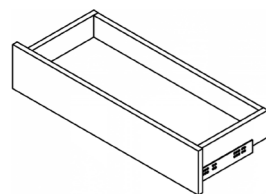
NAME	SIZE
S30ER	30w x 15h x 3/4 d
S36ER	36w x 15h x 3/4 d

Exchangeable shelf for corner units.
Item number refers to fit width.

Package Includes:

1 set per CTN

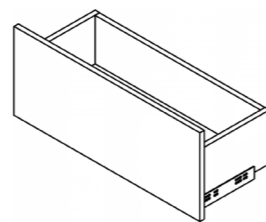
DRAWER FOR - 15^{5/8}" DEPTH



NAME	SIZE
DK15N	15w x 6 ^{1/2} h x 12d
DK18N	18w x 6 ^{1/2} h x 12d
DK21N	21w x 6 ^{1/2} h x 12d
DK24N	24w x 6 ^{1/2} h x 12d
DK30N	30w x 6 ^{1/2} h x 12d
DK36N	36w x 6 ^{1/2} h x 12d

Front height: 6 ⁵/₁₆" (160mm)
Includes box and slide
Package Includes:
1 set per CTN

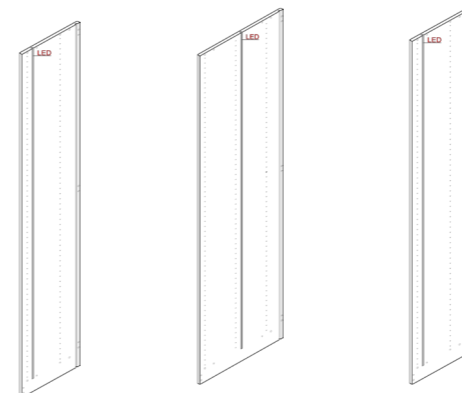
DEEP DRAWER FOR - 15^{5/8}" DEPTH



NAME	SIZE
DK15H	15w x 12 ^{1/2} h x 12d
DK18H	18w x 12 ^{1/2} h x 12d
DK21H	21w x 12 ^{1/2} h x 12d
DK24H	24w x 12 ^{1/2} h x 12d
DK30H	30w x 12 ^{1/2} h x 12d
DK36H	36w x 12 ^{1/2} h x 12d

Front height: 12 ⁵/₈" (320mm)
Includes box and slide
Package Includes:
1 set per CTN

LED PANELS FOR CLOSETS



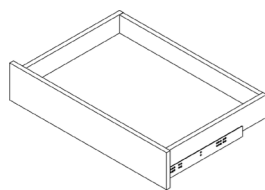
SP-15 ⁵/₈ D-LED for 15 ⁵/₈ depths SP-24 D-LED for 24" depths SP-ER-LED for corner units

NAME	SIZE
SP-15 ⁵ / ₈ D-LED	15 ⁵ / ₈ w x 84 h x ³ / ₄ d
SP-24 D-LED	24w x 84 h x ³ / ₄ d
SP-ER-LED	15w x 84 h x ³ / ₄ d

Left & right side panel with LED lights
One transformer is included
Package Includes:
1 set per CTN

ENERGY STAR
LED WARRANTY
Energy Star Rated
54,000hr Life Cycle Rating
Switch: 100,000 on/off cycles

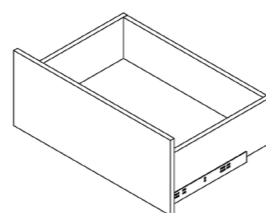
DRAWER FOR 24" DEPTH



NAME	SIZE
DK15DN	15w x 6 ^{1/2} h x 20d
DK18DN	18w x 6 ^{1/2} h x 20d
DK21DN	21w x 6 ^{1/2} h x 20d
DK24DN	24w x 6 ^{1/2} h x 20d
DK30DN	30w x 6 ^{1/2} h x 20d
DK36DN	36w x 6 ^{1/2} h x 20d

Front height: 6 ⁵/₁₆" (160mm)
Includes box and slide
Package Includes:
1 set per CTN

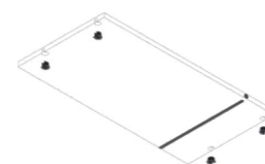
DRAWER FOR 24" DEPTH



NAME	SIZE
DK15DH	15w x 12 ^{1/2} h x 20d
DK18DH	18w x 12 ^{1/2} h x 20d
DK21DH	21w x 12 ^{1/2} h x 20d
DK24DH	24w x 12 ^{1/2} h x 20d
DK30DH	30w x 12 ^{1/2} h x 20d
DK36DH	36w x 12 ^{1/2} h x 20d

Front height: 12 ⁵/₈" (320mm)
Includes box and slide
Package Includes:
1 set per CTN

LED TOUCH SWITCH FOR 15^{5/8}" DEPTH



NAME	SIZE
S15 Touch Switch	15w x 14 ^{1/2} h x ³ / ₄ d
S18 Touch Switch	18w x 14 ^{1/2} h x ³ / ₄ d
S21 Touch Switch	21w x 14 ^{1/2} h x ³ / ₄ d
S24 Touch Switch	24w x 14 ^{1/2} h x ³ / ₄ d
S30 Touch Switch	30w x 14 ^{1/2} h x ³ / ₄ d
S36 Touch Switch	36w x 14 ^{1/2} h x ³ / ₄ d

Item number refers to fit width
Touch switch with light wire duct
Package Includes:
1 set per CTN

LED TOUCH SWITCH FOR 24" DEPTH



NAME	SIZE
S15D Touch Switch	15w x 22 ⁵ / ₈ h x ³ / ₄ d
S18D Touch Switch	18w x 22 ⁵ / ₈ h x ³ / ₄ d
S21D Touch Switch	21w x 22 ⁵ / ₈ h x ³ / ₄ d
S24D Touch Switch	24w x 22 ⁵ / ₈ h x ³ / ₄ d
S30D Touch Switch	30w x 22 ⁵ / ₈ h x ³ / ₄ d
S36D Touch Switch	36w x 22 ⁵ / ₈ h x ³ / ₄ d

Item number refers to fit width
Touch switch with light wire duct
Package Includes:
1 set per CTN



JOINT CONTROL BOX



Junction box with 3 terminals
Package Includes:
1 piece per CTN

JOINT CONTROL BOX ORDERING
Formula:
(1 + # of closet units) ÷ 2
Example:
(1 + 10) ÷ 2 = 5.5
round up to 6

REPLACEMENT TRANSFORMER



Please note: LED kits (above) include one transformer. Order this item if you need a replacement or additional transformer
Package Includes:
1 piece per CTN

EXTENSION CORD



Package Includes:
1 piece per CTN

PANTS & TIE RACK FOR 15⁵/₈" DEPTH



NAME	SIZE
TR30	30w x 13% d
TR36	36w x 13% d

For 30" or 36" width closet units
 Color: grey
 Soft close slide
 Includes box and slide
Package Includes:
 1 piece per CTN

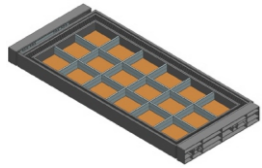
PANTS & TIE RACK FOR 24" DEPTH



NAME	SIZE
TR30D	30w x 19% d
TR36D	36w x 19% d

For 30" or 36" width closet units
 Color: grey
 Soft close slide
 Includes box and slide
Package Includes:
 1 piece per CTN

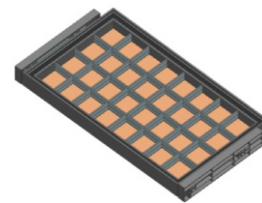
JEWELRY TRAY FOR 15⁵/₈" DEPTH



NAME	SIZE
OD30	30w x 13% d
OD36	36w x 13% d

For 30" or 36" width closet units
 Color: grey
 Soft close slide
 Includes box and slide
Package Includes:
 1 piece per CTN

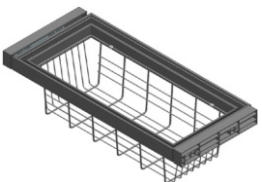
JEWELRY TRAY FOR 24" DEPTH



NAME	SIZE
OD30D	30w x 19% d
OD36D	36w x 19% d

For 30" or 36" width closet units
 Color: grey
 Soft close slide
 Includes box and slide
Package Includes:
 1 piece per CTN

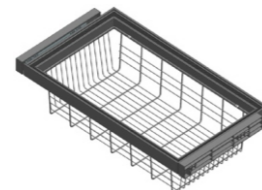
PULL OUT BASKET FOR 15⁵/₈" DEPTH



NAME	SIZE
BSK30	30w x 13% d
BSK36	36w x 13% d

For 30" or 36" width closet units
 Color: grey
 Soft close slide
 Includes box and slide
Package Includes:
 1 piece per CTN

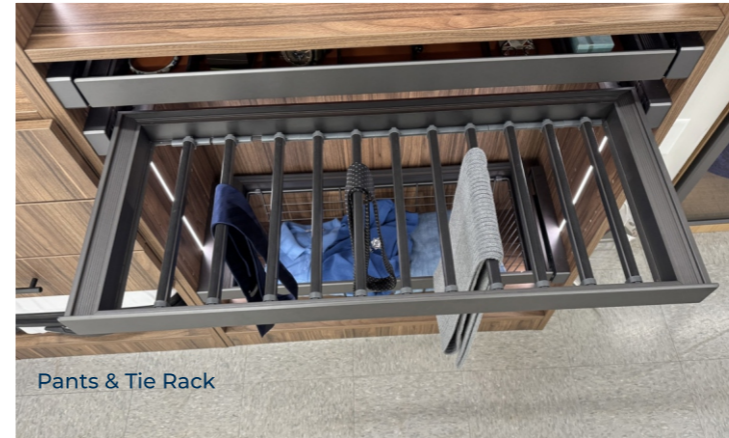
PULL OUT BASKET FOR 24" DEPTH



NAME	SIZE
BSK30D	30w x 19% d
BSK36D	36w x 19% d

For 30" or 36" width closet units
 Color: grey
 Soft close slide
 Includes box and slide
Package Includes:
 1 piece per CTN

CLOSET ACCESSORIES



Pants & Tie Rack



Jewelry Tray



Pull Out Storage Basket



Glass Door



GLASS DOOR



NAME	SIZE
GD1281	15w x 1 ³ / ₁₆ h x 81d
GD1581	18w x 1 ³ / ₁₆ h x 81d
GD1881	21w x 1 ³ / ₁₆ h x 81d
GD2181	24w x 1 ³ / ₁₆ h x 81d

Glass door with hinges included

Package Includes:

1 set per CTN

MIRROR



NAME	SIZE
MIR1437	14w x 37d

Mirror with slide mount rack

Package Includes:

1 piece per CTN

SHOE SHELF FOR 15⁵/₈" DEPTH



NAME	SIZE
SS24	24w x 14 ¹ / ₂ h x 3 ¹ / ₄ d
SS30	30w x 14 ¹ / ₂ h x 3 ¹ / ₄ d
SS36	36w x 14 ¹ / ₂ h x 3 ¹ / ₄ d

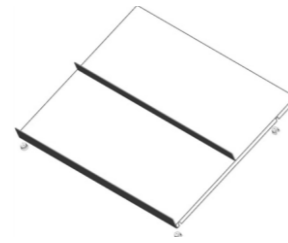
Shoe shelf with front bar

Tilt install

Package Includes:

2 sets per CTN

SHOE SHELF FOR 24" DEPTH



NAME	SIZE
SS24D	24w x 23h x 3 ¹ / ₄ d
SS30D	30w x 23h x 3 ¹ / ₄ d
SS36D	36w x 23h x 3 ¹ / ₄ d

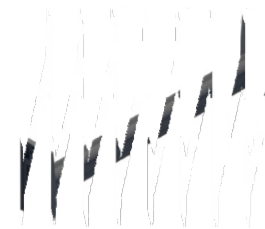
Shoe shelf with front bar

Tilt install

Package Includes:

2 sets per CTN

CLOSET ROD



NAME	SIZE
HR15	15w
HR18	18w
HR21	21w
HR24	24w
HR30	30w x
HR36	36w

Item number refers to fit width

Package Includes:

1 piece per CTN

FILLER



NAME	SIZE
F396	3w x 96h x 3 ¹ / ₄ d
F696	6w x 96h x 3 ¹ / ₄ d

Package Includes:

F396: 10 pieces per CTN

F696: 5 pieces per CTN



RARARTA

Warranty

The RaraRTACabinets warranty covers the repair or replacement of cabinets that have defects in materials or workmanship for a period of 20 years from the date of purchase. This warranty applies only to the original purchaser and is limited to residential use.

This warranty is strictly limited to repair or replacement of defective parts at the discretion of RaraRTACabinets. It does not cover labor costs for removal or reinstallation.

The warranty does not cover defects caused by improper handling, storage, installation, assembly, disassembly intentional damage, modifications, exposure to elements, humidity-related warping or splitting, accidental misuse, abuse, or negligence.

Natural wood may vary in texture, color, and grain, and may undergo subtle changes over time. For example, wood joints may develop visible cracks, and cabinet colors may lighten or darken due to environmental factors such as sunlight, smoke, moisture, and household cleaners. These variations are considered natural aging and are not covered under warranty.

Cabinet styles and finishes are subject to change and are exclusive to RaraRTACabinets. If your cabinets become unavailable, we will make every effort to provide replacements. However, if parts are no longer available, we may not be able to fulfill replacement requests.

If discontinued cabinets or parts are still obtainable, customers will only need to pay the cost of the parts plus shipping.

RaraRTACabinets reserves the right to determine the best method to resolve defects- this may include replacing specific components rather than entire cabinets, For example, we may replace a cabinet door instead of the full unit The determination of what qualifies as "defective" is made by RaraRTACabinets, not the customer, Photos will be required for replacement requests.

www.rarartacabinets.com
service@rarartacabinets.com

