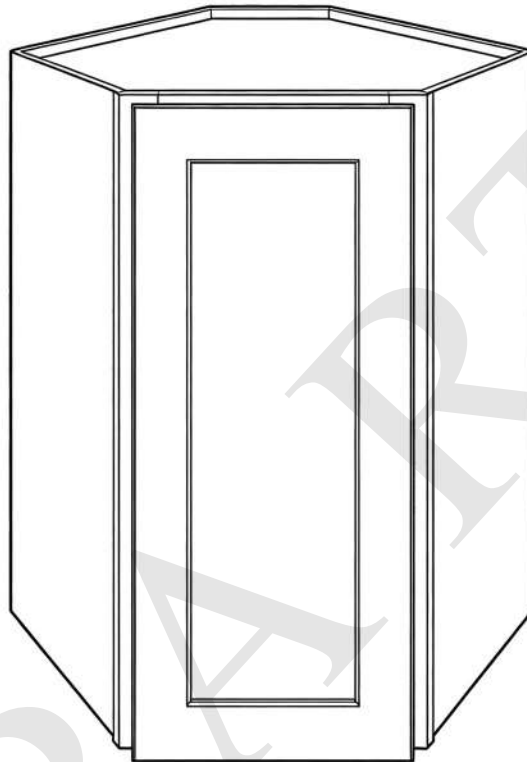


# ASSEMBLY INSTRUCTION

## BASE CABINET WITH SINGLE DOOR & DRAWER



### Cabinet Model

WDC2415, WDC2430, WDC2436, WDC2442,  
WDC273615, WDC274215

### Cabinet Style

Shaker Door Style Framed Cabinets



#### NOTE\*

See our cabinet assembly videos on our YouTube Channel

<http://www.youtube.com/@rarartacabinets>

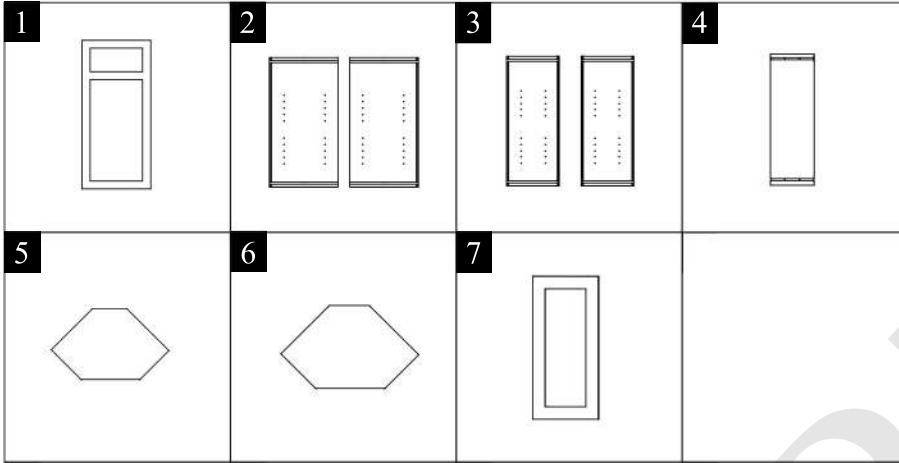
Inspect all panels and hardware to ensure you have everything needed.

We recommend laying the panels on flat soft base to protect the finish when assembling.

**Pre-Sales:** [service@rarartacabinets.com](mailto:service@rarartacabinets.com)

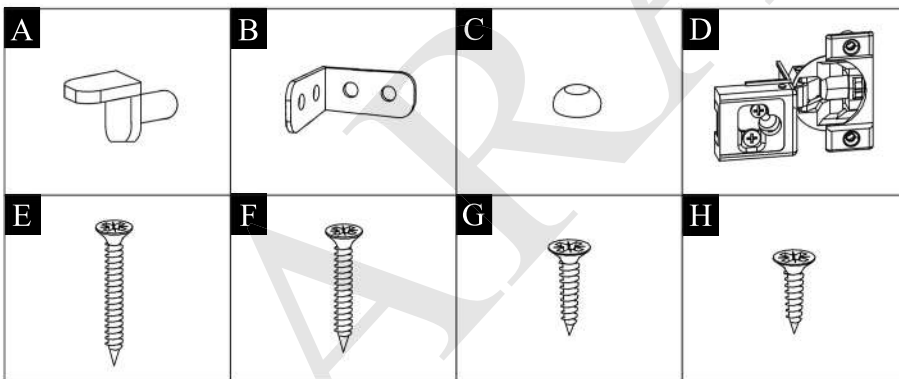
**After-Sales:** [logistics@rarartacabinets.com](mailto:logistics@rarartacabinets.com)

**Parts List**



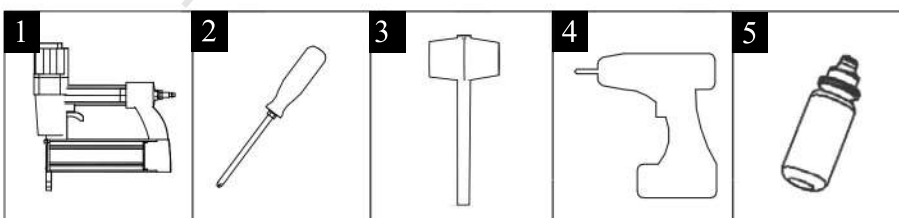
- 1** Face Frame
- 2** Back Side Panel x2
- 3** Front Side Panel x2
- 4** Back Panel
- 5** Shelves x2 or x3
- 6** Top & Bottom Panel
- 7** Door

**Hardware list**



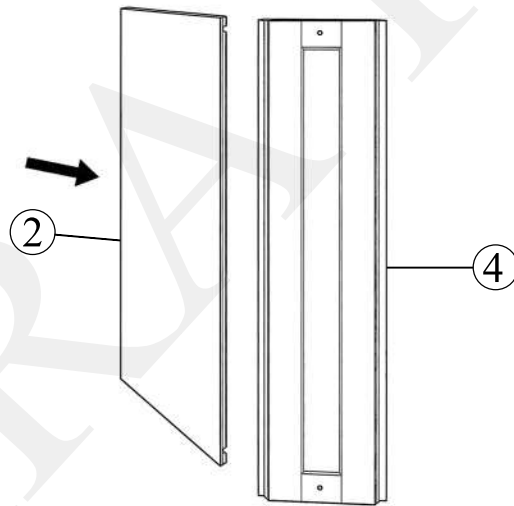
- A** Shelf Pins
- B** Metal L Brackets
- C** Clear Rubber Bumpers
- D** Hinges
- E** Large Screws 1 3/16"
- F** Medium Large Screws 1"
- G** Medium Screws 5/8"
- H** Small Screws 9/16"

**Tools Required**

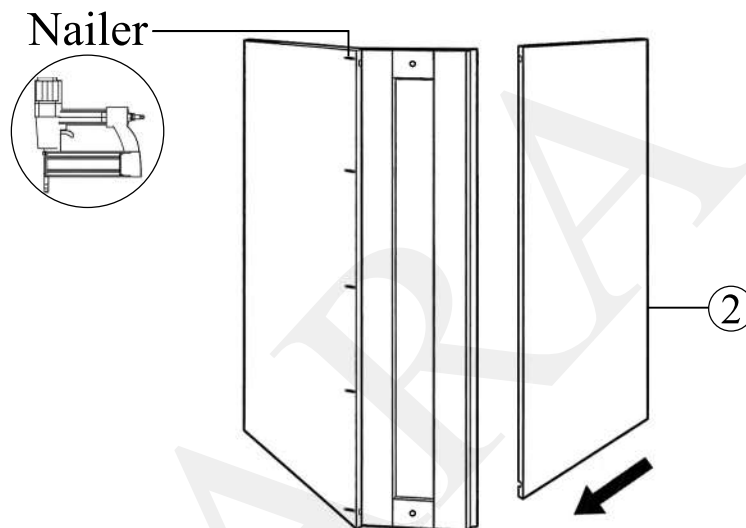


- 1** Nailer
- 2** Screwdriver
- 3** Rubber Mallet
- 4** Drill
- 5** Glue

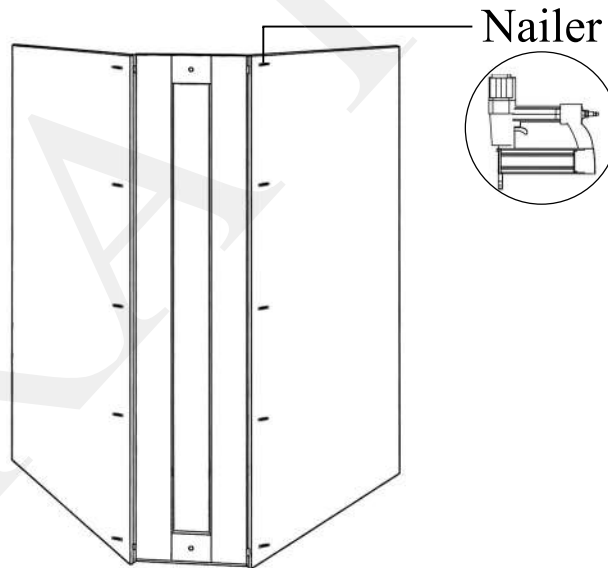
**Step1:** Attach the back side panel to the back panel.



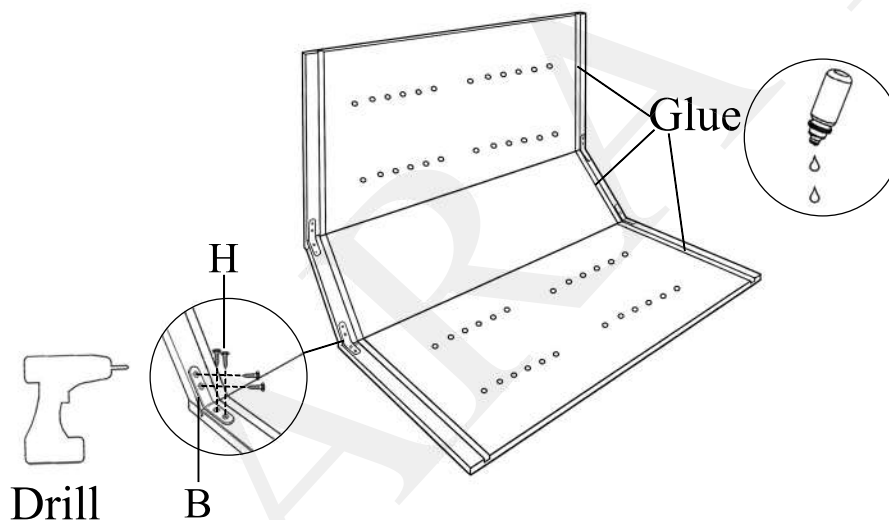
**Step2:** Use a nailer to fix the back panel & back side panel. And attach the another back side panel to the back panels.



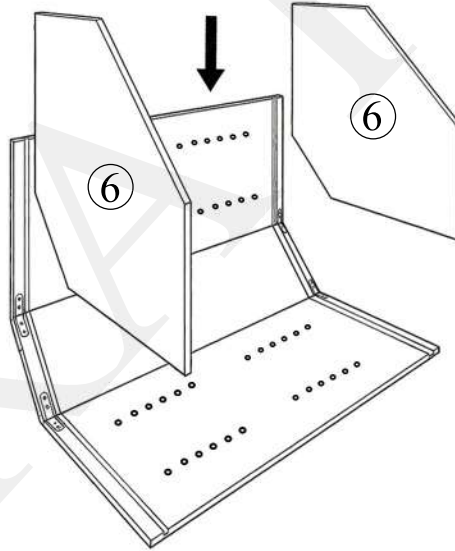
**Step3:** Fix the back side panel & back panel.



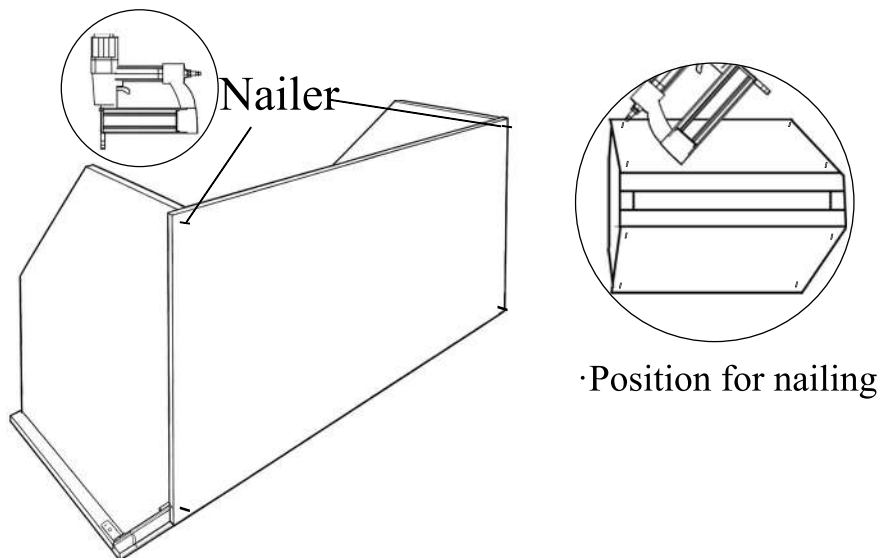
**Step4:** Attach the metal brackets, securing them with small screws. Apply glue to the grooves of the back panel and the two back side panel.



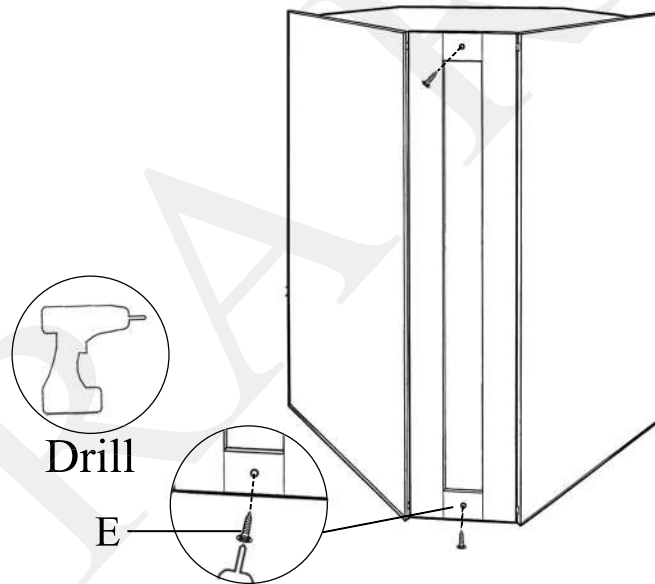
**Step5:** Slide the top and bottom panel into the grooves.



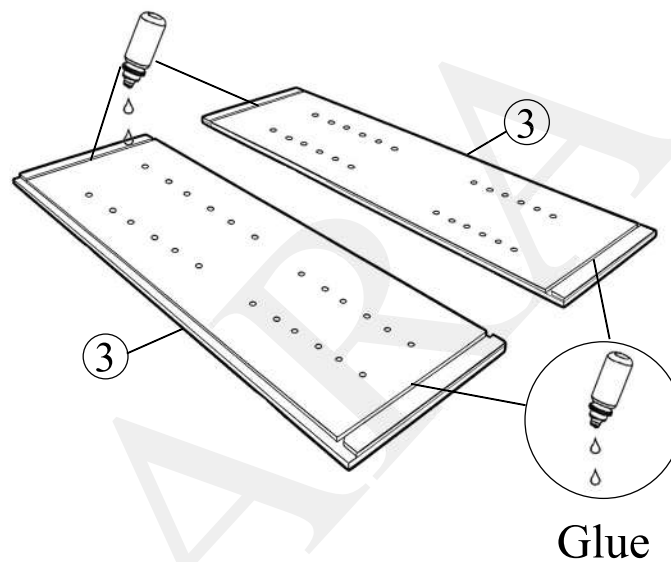
**Step6:** Secure the back side panels and top&bottom panels with a nailer.



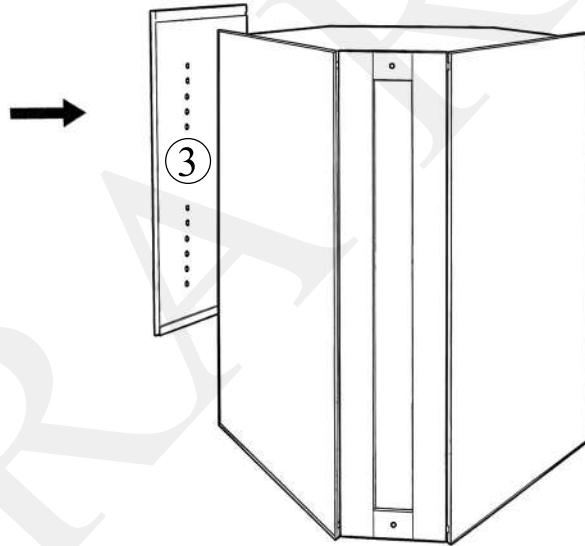
**Step7:** Insert the large screws through the back panel's holes, tightening them with a drill.



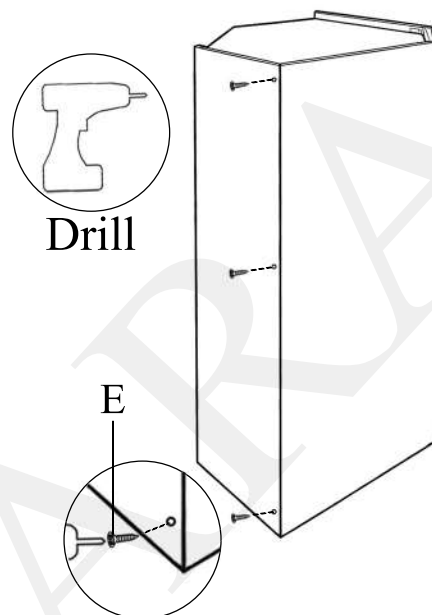
**Step8:** Apply glue to the grooves of the two front side panels.



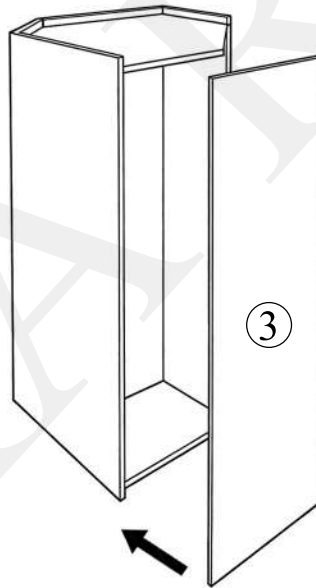
**Step9:** Connect the back side panel and top& bottom panels with the grooves of the front side panel.



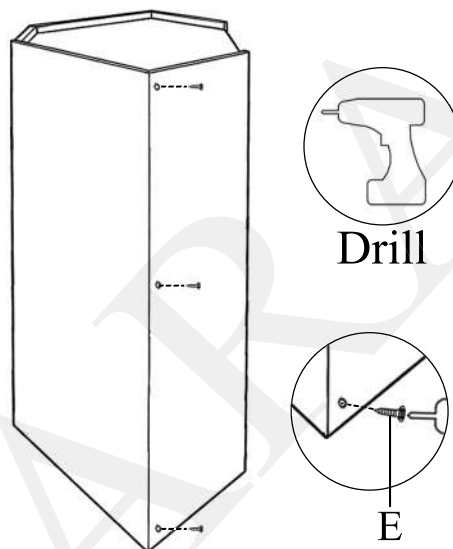
**Step10:** Secure the front side panel and back side panel by inserting the large screws into the pilot holes as shown.



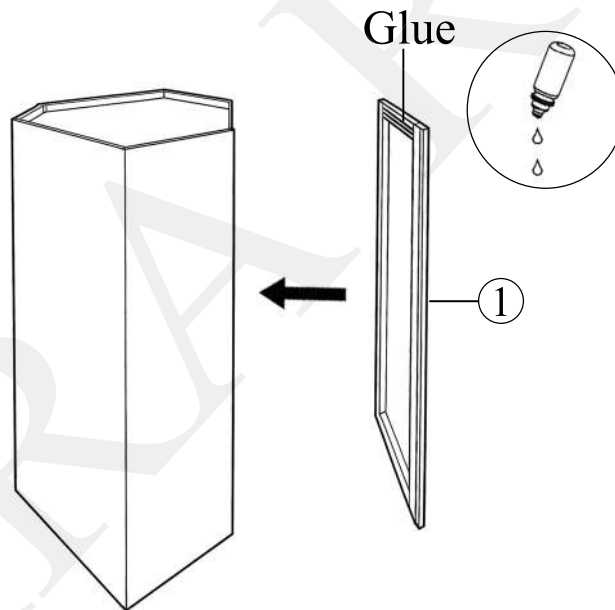
**Step11:** Repeat the same process on the other side as in step 9.



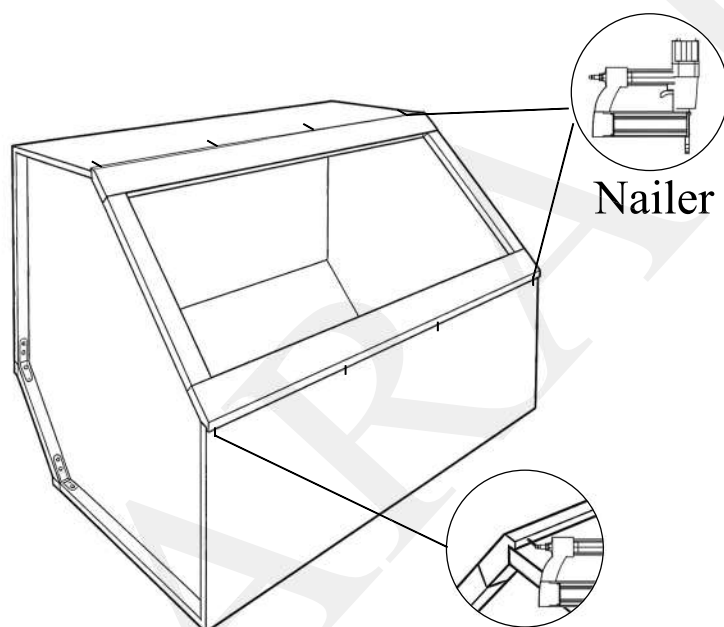
**Step12:** Repeat the same process on the other side as in step 10.



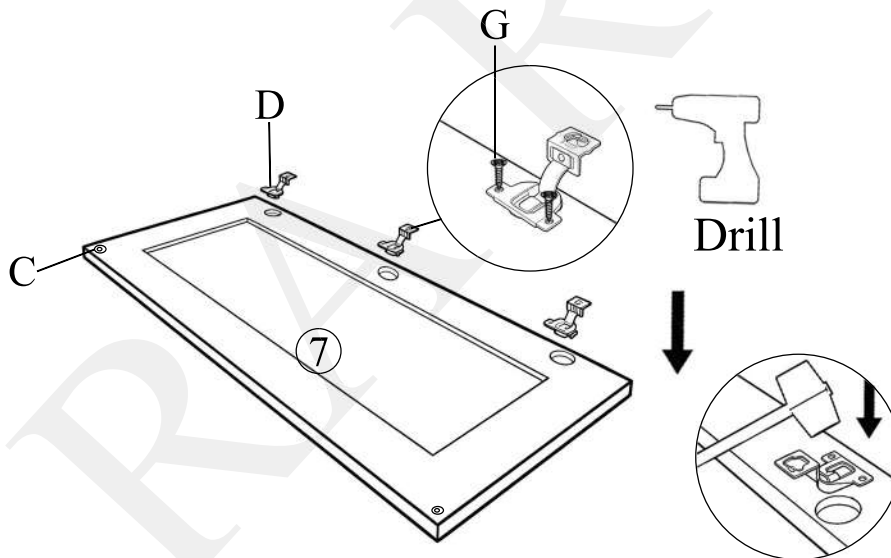
**Step13:** Apply glue to the grooves of the face frame, connect the side panels and top&bottom panel with the grooves of the face frame.



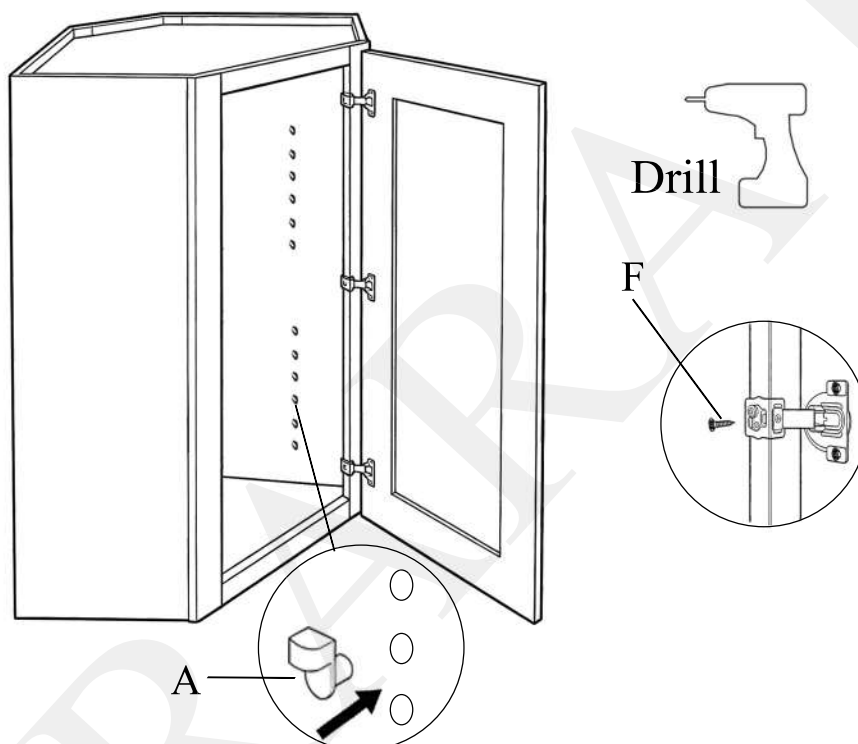
**Step14:** Secure the face frame and side panels with a nailer.



**Step15:** Align the hinges with the pre-drilled holes on the door frame. Then put the clear bumpers on the corners of the door front.



**Step16:** Secure the door with hinges to the pre-drilled face frame using the medium-large and medium screws. Insert the shelf pins into the pre-drilled holes on the inner side of the cabinet.



**Step17:** Place the adjustable shelves on the Pins in the desired locations.

